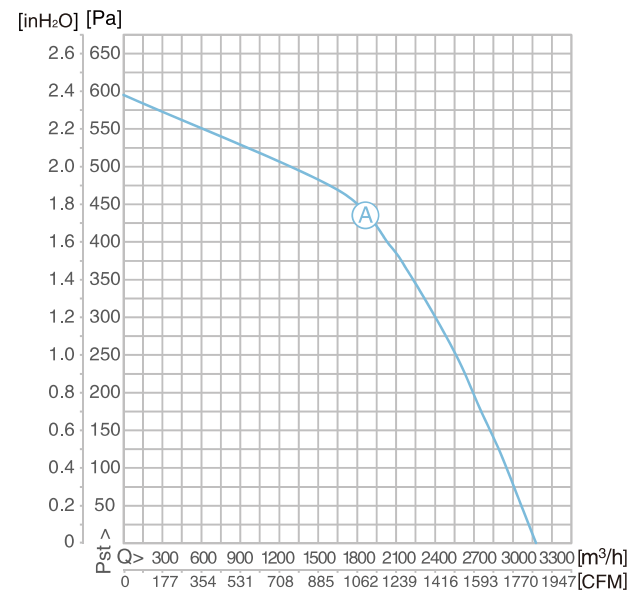
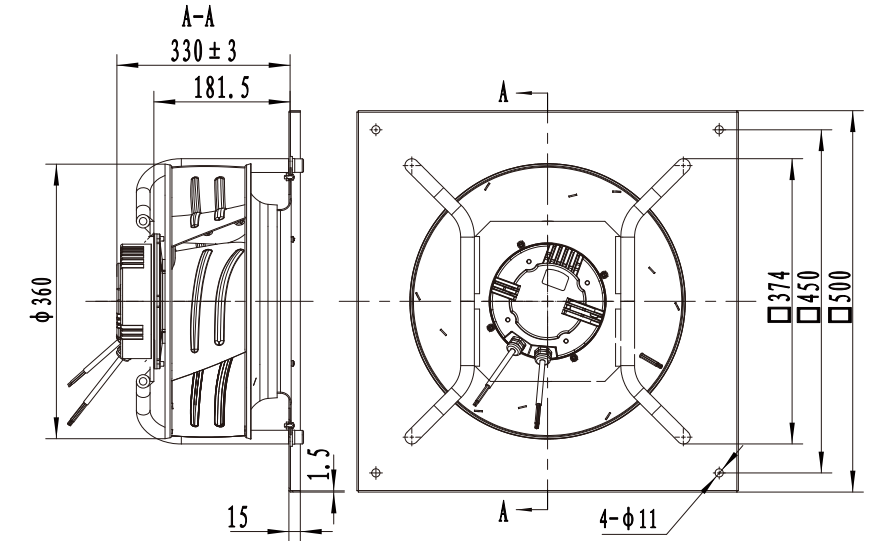
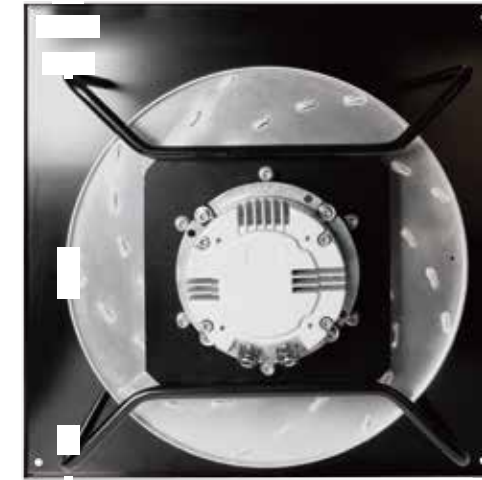
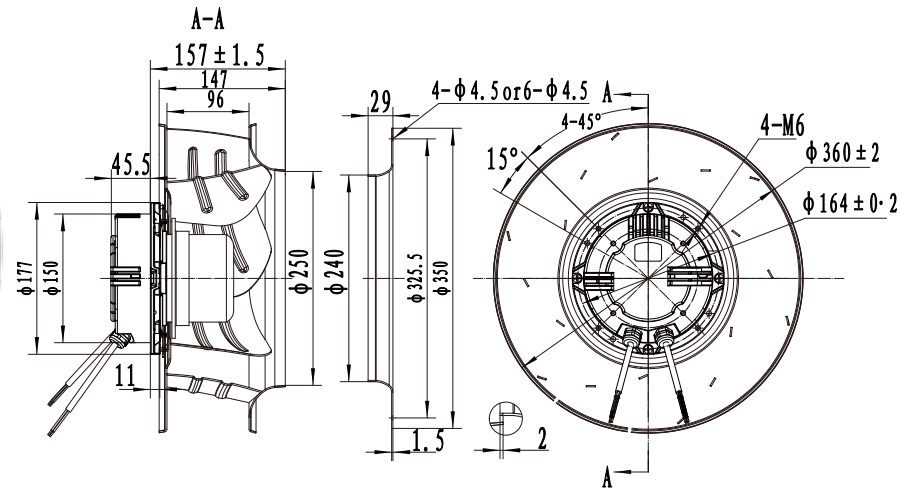


Ø355 EC CENTRIFUGAL FAN

EC 外轉子離心機

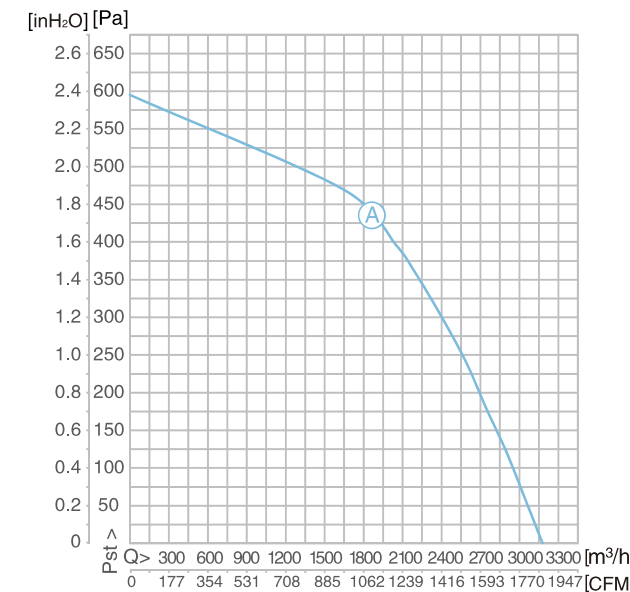
EC 外轉子離心機

Ø355 EC CENTRIFUGAL FAN



材料 Material	風輪-鋁合金; 轉子-鍍黑; 電氣罩-壓鑄鋁 Blade: Aluminum; Rotor-Black; Coated in black; Electron enclosure: Die-cast aluminum
轉向 Direction of rotation	逆時針, 從引線端看 Counter clockwise, see on the leads
電機防護等級 Type of protection	IP54
安裝位置 Mounting position	豎直, 水平線2個方向 Horizontal or Vertical
工作制 Operation Mode	(S1)
軸承 Bearings	免維護軸承 Maintenance-free ball bearings
電器特性 Technical features	控制信號輸入: 0-10V DC/PWM; 控制信號輸入: 4-20mA; 含主動式 PFC 電路; 速度反饋信號; 單路輔助電源; 10V DC ± 10%, max. 10mA Control input 0-10V DC/PWM; Control input 4-20mA; Including active PFC circuit; Speed signal feedback; Single auxiliary output power supply: 10V DC ± 10%, max 10mA
保護 Protection	限流、堵轉、軟啟動、缺相故障、過溫保護、過欠壓保護 Current limitation, Stall protection, Soft start protection, Open phase protection, Overheating protection, Over Under voltage protection
產品符合的認證 Approvals	CQC、CE、UL 認證 CQC, CE, UL certified
環境溫度 Amb. Temp	-25~+60°C
絕緣等級 Insulation class	F

註: 風機數據為換算到標準大氣壓20°C, 配浦力特導風圈測試時的性能。
Note: Fan data is converted to standard atmospheric pressure at 20°C, with Pulite wall plate test performance.



材料 Material	風輪-鋁合金; 轉子-鍍黑; 電氣罩-壓鑄鋁 Blade: Aluminum; Rotor-Black; Coated in black; Electron enclosure: Die-cast aluminum
轉向 Direction of rotation	逆時針, 從引線端看 Counter clockwise, see on the leads
電機防護等級 Type of protection	IP54
安裝位置 Mounting position	豎直, 水平線2個方向 Horizontal or Vertical
工作制 Operation Mode	(S1)
軸承 Bearings	免維護軸承 Maintenance-free ball bearings
電器特性 Technical features	控制信號輸入: 0-10V DC/PWM; 控制信號輸入: 4-20mA; 含主動式 PFC 電路; 速度反饋信號; 單路輔助電源; 10V DC ± 10%, max. 10mA Control input 0-10V DC/PWM; Control input 4-20mA; Including active PFC circuit; Speed signal feedback; Single auxiliary output power supply: 10V DC ± 10%, max 10mA
保護 Protection	限流、堵轉、軟啟動、缺相故障、過溫保護、過欠壓保護 Current limitation, Stall protection, Soft start protection, Open phase protection, Overheating protection, Over Under voltage protection
產品符合的認證 Approvals	CQC、CE、UL 認證 CQC, CE, UL certified
環境溫度 Amb. Temp	-25~+60°C
絕緣等級 Insulation class	F

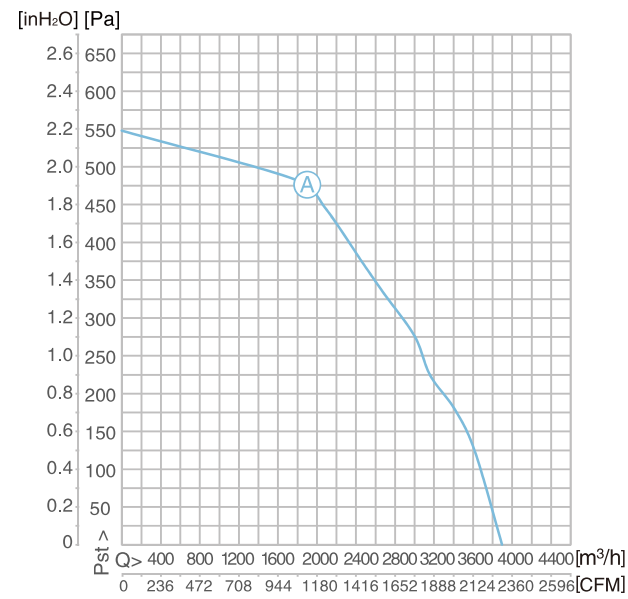
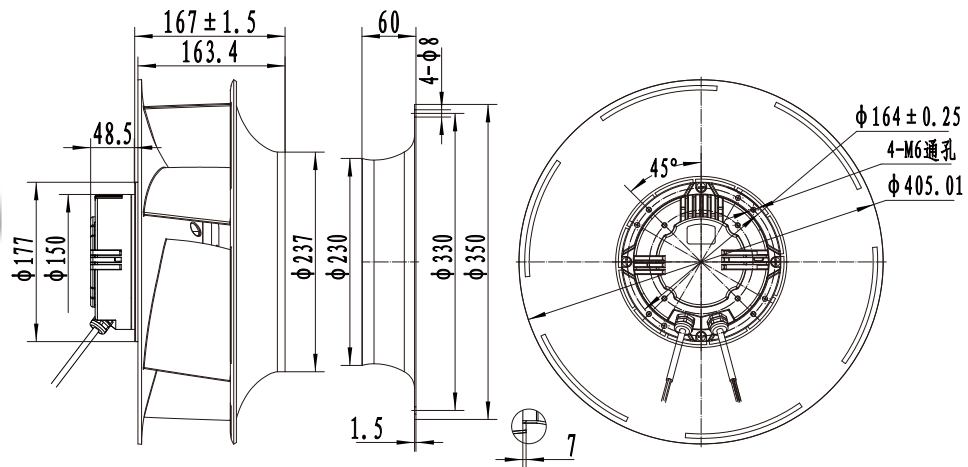
註: 風機數據為換算到標準大氣壓20°C, 配浦力特導風圈測試時的性能。
Note: Fan data is converted to standard atmospheric pressure at 20°C, with Pulite wall plate test performance.

型號 MODEL	電壓 Voltage (V)	頻率 Frequency (Hz)	功率 Power (W)	風量 Airflow (m³/h)	電流 Current (A)	轉速 RPM (r/min)	噪音 Noise (dB(A))	接線圖 Wiring Diagram
PMDWF84L50-B355×147	1~230	50/60	294	Ⓐ	1.34	1800	70	P63

型號 MODEL	電壓 Voltage (V)	頻率 Frequency (Hz)	功率 Power (W)	風量 Airflow (m³/h)	電流 Current (A)	轉速 RPM (r/min)	噪音 Noise (dB(A))	接線圖 Wiring Diagram
PMDWF84L50-B355×147 U	1~230	50/60	294	Ⓐ	1.34	1800	70	P63

Ø355 EC CENTRIFUGAL FAN

EC 外轉子離心機



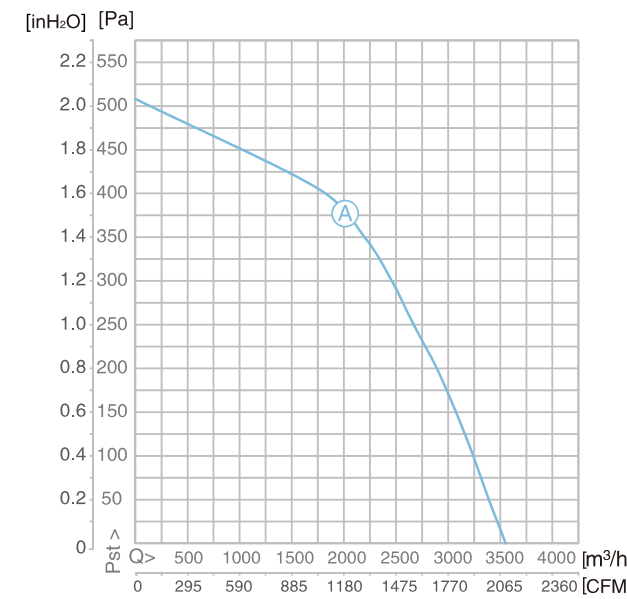
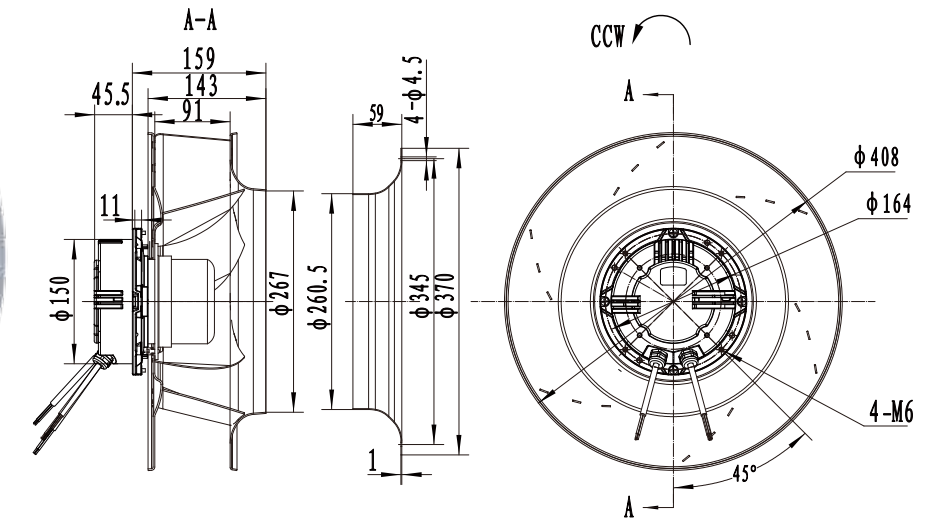
註:風機數據為換算到標準大氣壓20°C,配浦力特導風圈測試時的性能。
Note: Fan data is converted to standard atmospheric pressure at 20°C, with Pulite wall plate test performance.

材料 Material	風輪-塑膠; 轉子-鍍黑; 電氣罩-壓鑄鋁 Blade: Plastic; Rotor-Black; Coated in black; Electronenclosure: Die-cast aluminum
轉向 Direction of rotation	逆時針, 從引線端看 Counter clockwise, see on the leads
電機防護等級 Type of protection	IP54
安裝位置 Mounting position	豎直, 水平線2個方向 Horizontal or Vertical
工作制 Operation Mode	(S1)
軸承 Bearings	免維護軸承 Maintenance-free ball bearings
電器特性 Technical features	控制信號輸入: 0-10V DC/PWM; 控制信號輸入: 4-20mA; 含主動式 PFC 電路; 速度反饋信號; 單路輔助電源; 10V DC ± 10%, max.10mA Control input 0-10V DC/PWM; Control input 4-20mA; Including active PFC circuit; Speed signal feedback; Single auxiliary output power supply: 10V DC ± 10%, max 10mA
保護 Protection	限流、堵轉、軟啟動、缺相故障、過溫保護、過欠壓保護 Current limitation, Stall protection, Soft start protection, Open phase protection, Overheating protection, Over Under voltage protection
產品符合的認證 Approvals	CQC、CE、UL 認證 CQC, CE, UL certified
環境溫度 Amb. Temp	-25~+60°C
絕緣等級 Insulation class	F

型號 MODEL	電壓 Voltage (V)	頻率 Frequency (Hz)	功率 Power (W)	風量 Airflow (m³/h)	電流 Current (A)	轉速 RPM (r/min)	噪音 Noise (dB(A))	接線圖 Wiring Diagram
PMDWF84L50-B355x163	1~230	50/60	304	A	1.32	1720	70	P63

EC 外轉子離心機

Ø400 EC CENTRIFUGAL FAN



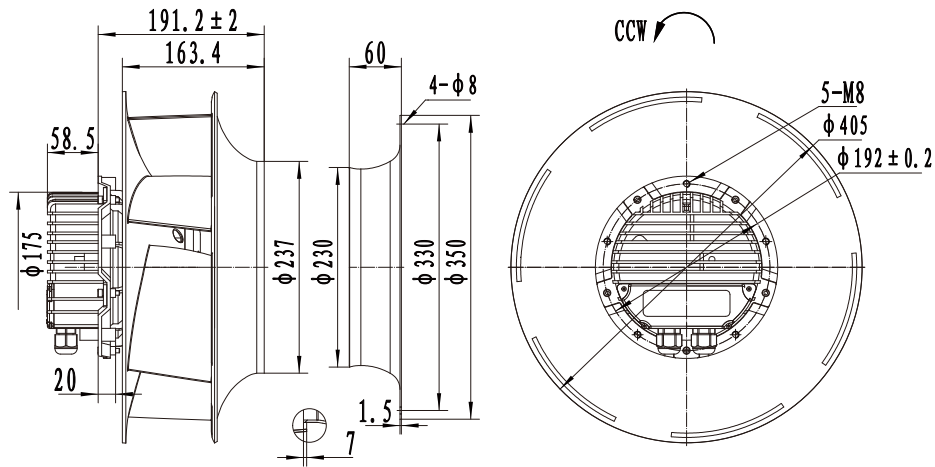
註:風機數據為換算到標準大氣壓20°C,配浦力特導風圈測試時的性能。
Note: Fan data is converted to standard atmospheric pressure at 20°C, with Pulite wall plate test performance.

材料 Material	風輪-鋁合金; 轉子-鍍黑; 電氣罩-壓鑄鋁 Blade: Aluminum; Rotor-Black; Coated in black; Electronenclosure: Die-cast aluminum
轉向 Direction of rotation	逆時針, 從引線端看 Counter clockwise, see on the leads
電機防護等級 Type of protection	IP54
安裝位置 Mounting position	豎直, 水平線2個方向 Horizontal or Vertical
工作制 Operation Mode	(S1)
軸承 Bearings	免維護軸承 Maintenance-free ball bearings
電器特性 Technical features	控制信號輸入: 0-10V DC/PWM; 控制信號輸入: 4-20mA; 含主動式 PFC 電路; 速度反饋信號; 單路輔助電源; 10V DC ± 10%, max.10mA Control input 0-10V DC/PWM; Control input 4-20mA; Including active PFC circuit; Speed signal feedback; Single auxiliary output power supply: 10V DC ± 10%, max 10mA
保護 Protection	限流、堵轉、軟啟動、缺相故障、過溫保護、過欠壓保護 Current limitation, Stall protection, Soft start protection, Open phase protection, Overheating protection, Over Under voltage protection
產品符合的認證 Approvals	CQC、CE、UL 認證 CQC, CE, UL certified
環境溫度 Amb. Temp	-25~+60°C
絕緣等級 Insulation class	F

型號 MODEL	電壓 Voltage (V)	頻率 Frequency (Hz)	功率 Power (W)	風量 Airflow (m³/h)	電流 Current (A)	轉速 RPM (r/min)	噪音 Noise (dB(A))	接線圖 Wiring Diagram
PMDWF84L50-B400x142	1~230	50/60	263	A	1.15	1450	70	P63

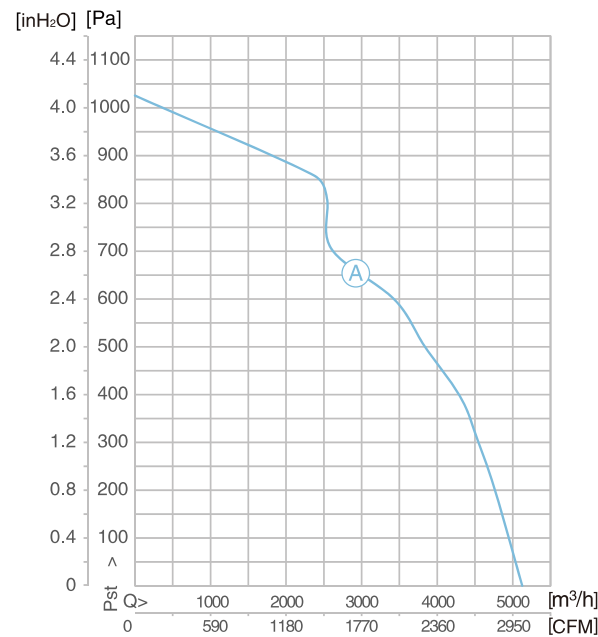
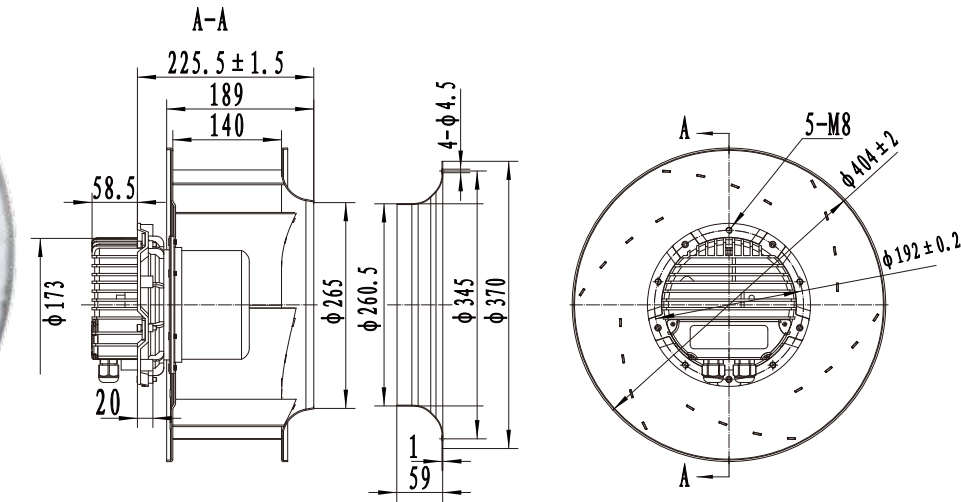
Ø355 EC CENTRIFUGAL FAN

EC 外轉子離心機



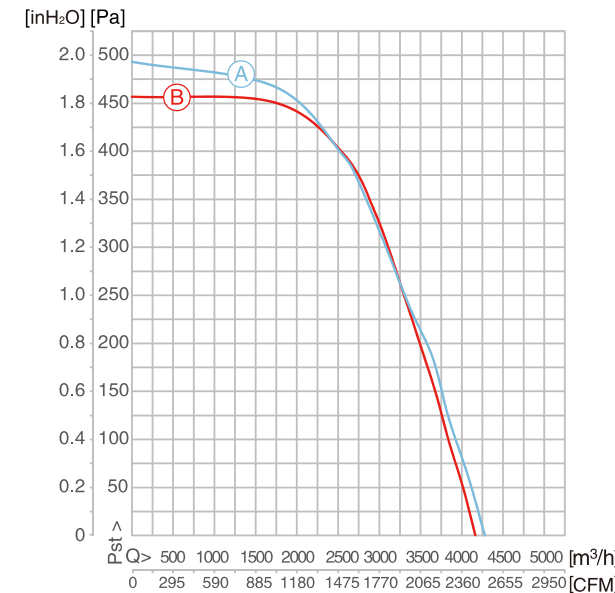
EC 外轉子離心機

Ø400 EC CENTRIFUGAL FAN



材料 Material	風輪-塑膠; 轉子-鍍黑; 電氣罩-壓鑄鋁 Blade: Plastic; Rotor-Black; Coated in black; Electron enclosure: Die-cast aluminum
轉向 Direction of rotation	順時針, 從引線端看 Counter clockwise, see on the leads
電機防護等級 Type of protection	IP54
安裝位置 Mounting position	豎直, 水平線2個方向 Horizontal or Vertical
工作制 Operation Mode	(S1)
軸承 Bearings	免維護軸承 Maintenance-free ball bearings
電器特性 Technical features	控制信號輸入: 0-10V DC/PWM; 控制信號輸入: 4-20mA; 含主動式 PFC 電路; 速度反饋信號; 單路輔助電源; 10V DC ± 10%, max. 10mA Control input 0-10V DC/PWM; Control input 4-20mA; Including active PFC circuit; Speed signal feedback; Single auxiliary output power supply: 10V DC ± 10%, max 10mA
保護 Protection	限流、堵轉、軟啟動、缺相故障、過溫保護、過欠壓保護 Current limitation, Stall protection, Soft start protection, Open phase protection, Overheating protection, Over Under voltage protection
產品符合的認證 Approvals	CQC、CE、UL 認證 CQC, CE, UL certified
環境溫度 Amb. Temp	-25~+60°C
絕緣等級 Insulation class	F

註: 風機數據為換算到標準大氣壓20°C, 配浦力特導風圈測試時的性能。
Note: Fan data is converted to standard atmospheric pressure at 20°C, with Pulite wall plate test performance.



材料 Material	風輪-鋁合金; 轉子-鍍黑; 電氣罩-壓鑄鋁 Blade: Aluminum; Rotor-Black; Coated in black; Electron enclosure: Die-cast aluminum
轉向 Direction of rotation	順時針, 從引線端看 Counter clockwise, see on the leads
電機防護等級 Type of protection	IP54
安裝位置 Mounting position	豎直, 水平線2個方向 Horizontal or Vertical
工作制 Operation Mode	(S1)
軸承 Bearings	免維護軸承 Maintenance-free ball bearings
電器特性 Technical features	控制信號輸入: 0-10V DC/PWM; 控制信號輸入: 4-20mA; RS485 通訊; 速度反饋信號; 單路輔助電源; 10V DC ± 10%, max. 10mA Control input 0-10V DC/PWM; Control input 4-20mA; BUS RS485; Speed signal feedback; Single auxiliary output power supply: 10V DC ± 10%, max 10mA
保護 Protection	限流、堵轉、軟啟動、缺相故障、過溫保護、過欠壓保護 Current limitation, Stall protection, Soft start protection, Open phase protection, Overheating protection, Over Under voltage protection
產品符合的認證 Approvals	CQC、CE、UL 認證 CQC, CE, UL certified
環境溫度 Amb. Temp	-25~+60°C
絕緣等級 Insulation class	F

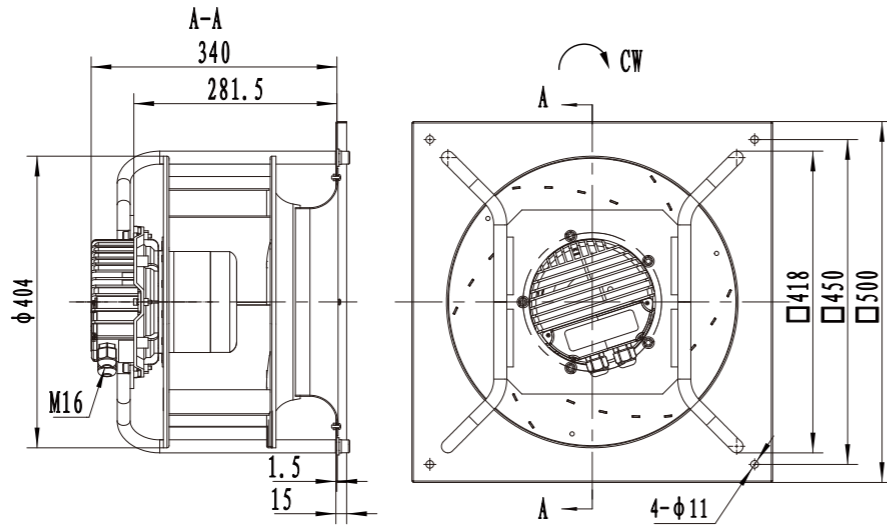
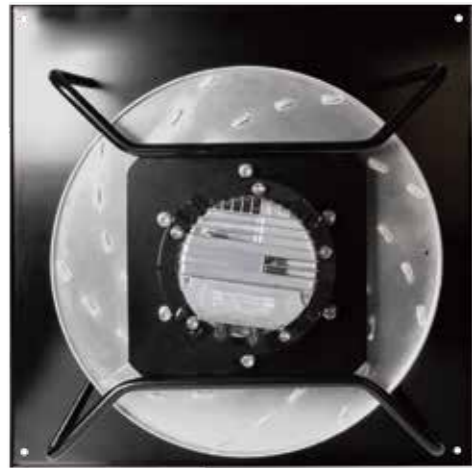
註: 風機數據為換算到標準大氣壓20°C, 配浦力特導風圈測試時的性能。
Note: Fan data is converted to standard atmospheric pressure at 20°C, with Pulite wall plate test performance.

型號 MODEL	電壓 Voltage (V)	頻率 Frequency (Hz)	功率 Power (W)	風量 Airflow (m ³ /h)	電流 Current (A)	轉速 RPM (r/min)	噪音 Noise (dB(A))	接線圖 Wiring Diagram
PMSWF112L45-B355×163	3~400	50/60	861	Ⓐ	1.47	2400	79	P65

型號 MODEL	電壓 Voltage (V)	頻率 Frequency (Hz)	功率 Power (W)	風量 Airflow (m ³ /h)	電流 Current (A)	轉速 RPM (r/min)	噪音 Noise (dB(A))	接線圖 Wiring Diagram
PMDWF112L60-B400×188	1~230	50/60	404.5	Ⓐ	1.89	1500	73	P64
PMSWF112L60-B400×188	3~400	50/60	378	Ⓑ	0.83	1500	73	P65

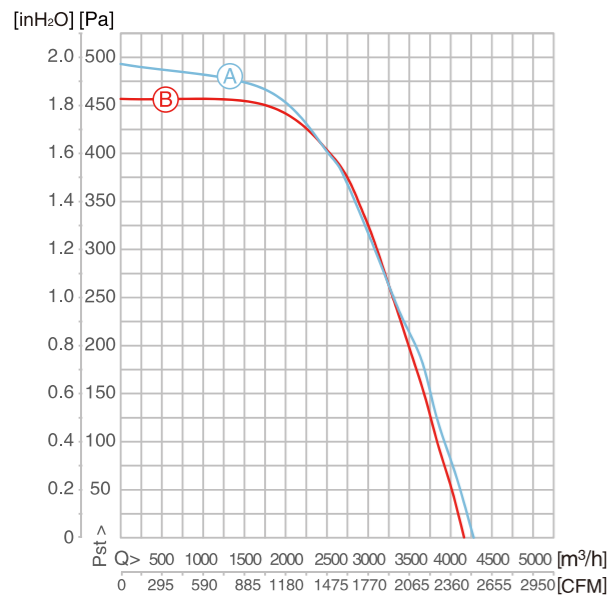
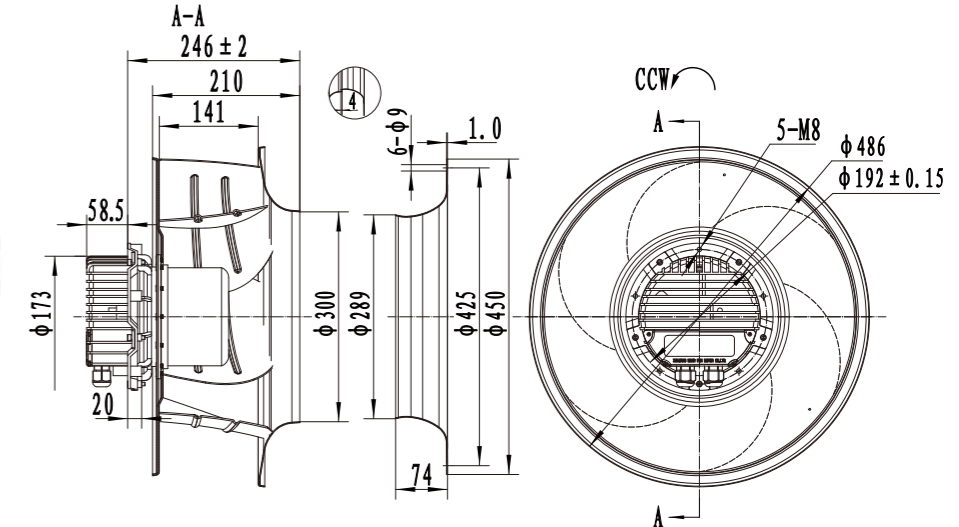
Ø400 EC CENTRIFUGAL FAN

EC外轉子離心機



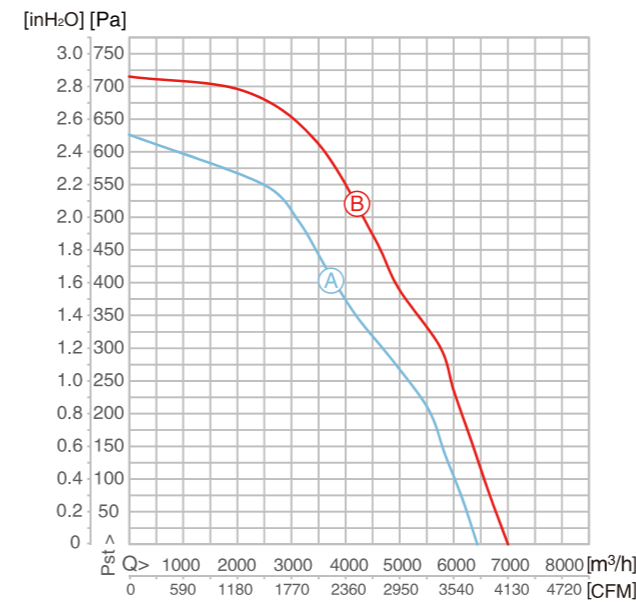
EC外轉子離心機

Ø450 EC CENTRIFUGAL FAN



註:風機數據為換算到標準大氣壓20°C,配浦力特導風圈測試時的性能。
Note: Fan data is converted to standard atmospheric pressure at 20°C, with Pulite wall plate test performance.

材料 Material	風輪-鋁合金; 轉子-鍍黑; 電氣罩-壓鑄鋁 Blade: Aluminum; Rotor-Black; Coated in black; Electron enclosure: Die-cast aluminum
轉向 Direction of rotation	順時針, 從引線端看 Counter clockwise, see on the leads
電機防護等級 Type of protection	IP54
安裝位置 Mounting position	豎直, 水平線2個方向 Horizontal or Vertical
工作制 Operation Mode	(S1)
軸承 Bearings	免維護軸承 Maintenance-free ball bearings
電器特性 Technical features	控制信號輸入: 0-10V DC/PWM; 控制信號輸入: 4-20mA; RS485通訊; 速度反饋信號; 報警信號繼電器; 10V DC ± 10%, max.10mA; 20V DC ± 10%; max.50mA Control input 0-10V DC/PWM; Control input 4-20mA; BUS RS485; Speed signal feedback; Dual auxiliary output power supplies: 10VDC ± 10%, max.10mA, 20VDC ± 10% Max 50mA
保護 Protection	限流、堵轉、軟啟動、缺相故障、過溫保護、過欠壓保護 Current limitation, Stall protection, Soft start protection, Open phase protection, Overheating protection, Over Under voltage protection
產品符合的認證 Approvals	CQC、CE、UL 認證 CQC, CE, UL certified
環境溫度 Amb. Temp	-25~+60°C
絕緣等級 Insulation class	F



註:風機數據為換算到標準大氣壓20°C,配浦力特導風圈測試時的性能。
Note: Fan data is converted to standard atmospheric pressure at 20°C, with Pulite wall plate test performance.

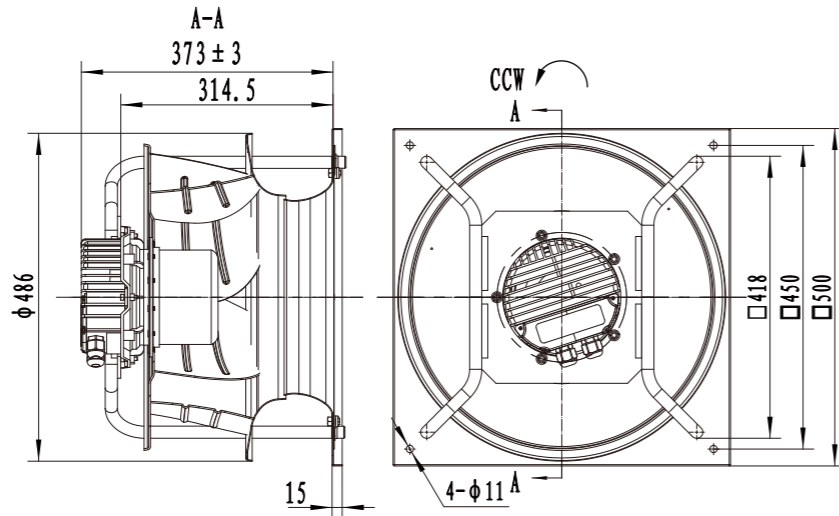
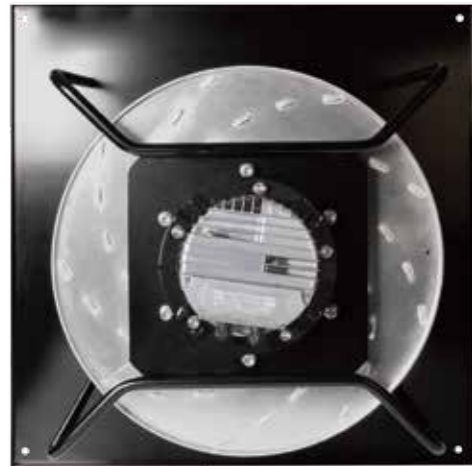
材料 Material	風輪-鋁合金; 轉子-鍍黑; 電氣罩-壓鑄鋁 Blade: Aluminum; Rotor-Black; Coated in black; Electron enclosure: Die-cast aluminum
轉向 Direction of rotation	逆時針, 從引線端看 Counter clockwise, see on the leads
電機防護等級 Type of protection	IP54
安裝位置 Mounting position	豎直, 水平線2個方向 Horizontal or Vertical
工作制 Operation Mode	(S1)
軸承 Bearings	免維護軸承 Maintenance-free ball bearings
電器特性 Technical features	控制信號輸入: 0-10V DC/PWM; 控制信號輸入: 4-20mA; RS485通訊; 速度反饋信號; 報警信號繼電器; 雙路輔助電源; 10V DC ± 10%, max.10mA; 20V DC ± 10%; max.50mA Control input 0-10V DC/PWM; Control input 4-20mA; BUS RS485; Speed signal feedback; Dual auxiliary output power supplies: 10VDC ± 10%, max.10mA, 20VDC ± 10% Max 50mA
保護 Protection	限流、堵轉、軟啟動、缺相故障、過溫保護、過欠壓保護 Current limitation, Stall protection, Soft start protection, Open phase protection, Overheating protection, Over Under voltage protection
產品符合的認證 Approvals	CQC、CE、UL 認證 CQC, CE, UL certified
環境溫度 Amb. Temp	-25~+60°C
絕緣等級 Insulation class	F

型號 MODEL	電壓 Voltage (V)	頻率 Frequency (Hz)	功率 Power (W)	風量 Airflow (m³/h)	電流 Current (A)	轉速 RPM (r/min)	噪音 Noise (dB(A))	接線圖 Wiring Diagram
PMDWF112L60-B400×188 U	1 ~ 230	50/60	404.5	A	1.89	1500	73	P64
PMSWF112L60-B400×188 U	3 ~ 400	50/60	378	B	0.83	1500	73	P65

型號 MODEL	電壓 Voltage (V)	頻率 Frequency (Hz)	功率 Power (W)	風量 Airflow (m³/h)	電流 Current (A)	轉速 RPM (r/min)	噪音 Noise (dB(A))	接線圖 Wiring Diagram
PMDWF112L60-B450×210	1 ~ 230	50/60	710	A	3.1	1500	80	P64
PMSWF112L60-B450×210	3 ~ 400	50/60	860	B	1.53	1600	83	P65

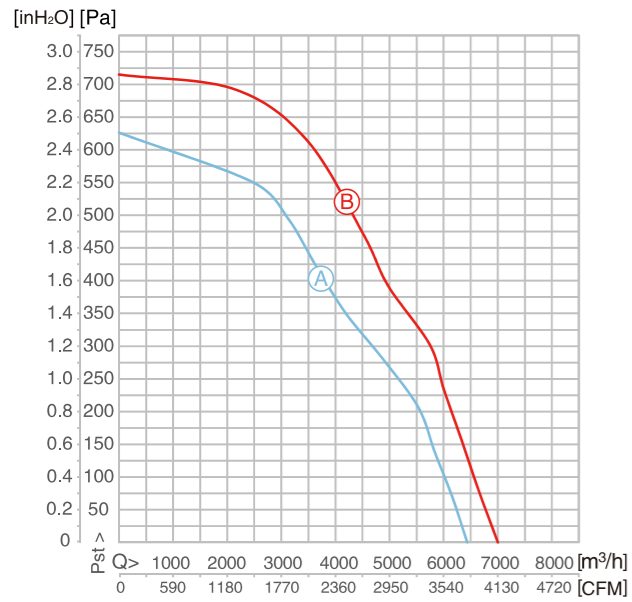
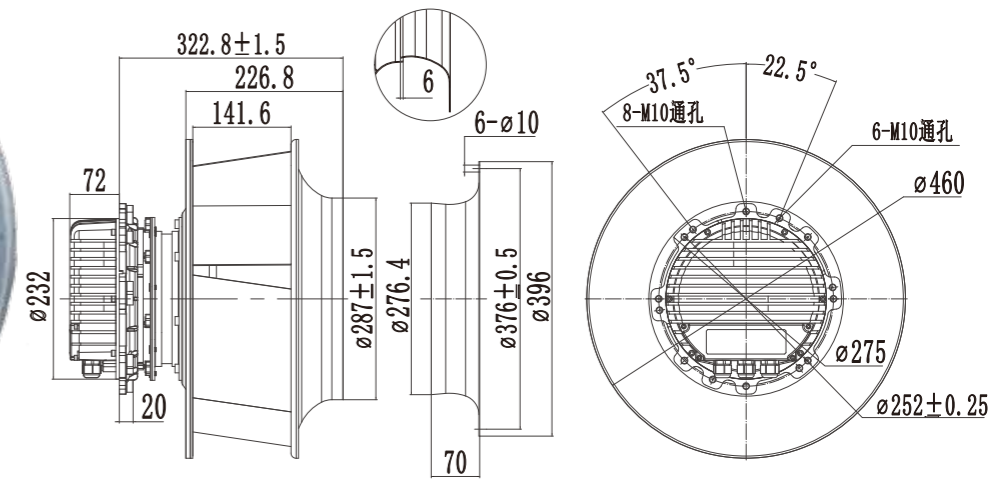
Ø450 EC CENTRIFUGAL FAN

EC外轉子離心機



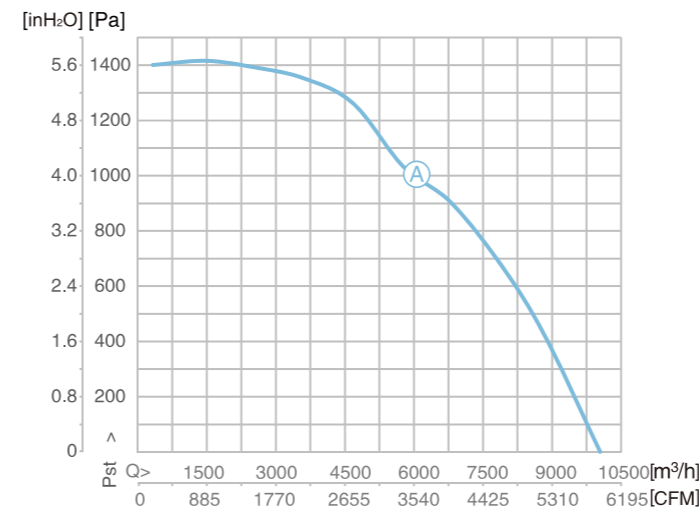
EC外轉子離心機

Ø400 EC CENTRIFUGAL FAN



材料 Material	風輪-鋁合金; 轉子-鍍黑; 電氣罩-壓鑄鋁 Blade: Aluminum; Rotor-Black; Coated in black; Electronenclosure: Die-cast aluminum
轉向 Direction of rotation	逆時針, 從引線端看 Counter clockwise, see on the leads
電機防護等級 Type of protection	IP54
安裝位置 Mounting position	豎直, 水平線2個方向 Horizontal or Vertical
工作制 Operation Mode	(S1)
軸承 Bearings	免維護軸承 Maintenance-free ball bearings
電器特性 Technical features	控制信號輸入: 0-10V DC/PWM; 控制信號輸入: 4-20mA; RS485通訊; 速度反饋信號; 報警信號繼電器; 雙路輔助電源; 10V DC ± 10%, max.10mA; 20V DC ± 10%; max.50mA Control input 0-10V DC/PWM; Control input 4-20mA; BUS RS485; Speed signal feedback; Dual auxiliary output power supplies: 10VDC ± 10%, max.10mA, 20VDC ± 10% Max.50mA
保護 Protection	限流、堵轉、軟啟動、缺相故障、過溫保護、過欠壓保護 Current limitation, Stall protection, Soft start protection, Open phase protection, Overheating protection, Over Under voltage protection
產品符合的認證 Approvals	CQC、CE、UL 認證 CQC, CE, UL certified
環境溫度 Amb.Temp	-25~+60°C
絕緣等級 Insulation class	F

註: 風機數據為換算到標準大氣壓20°C, 配浦力特導風圈測試時的性能。
Note: Fan data is converted to standard atmospheric pressure at 20°C, with Pulite wall plate test performance.



材料 Material	風輪-鋁合金; 轉子-鍍黑; 電氣罩-壓鑄鋁 Blade: Aluminum; Rotor-Black; Coated in black; Electronenclosure: Die-cast aluminum
轉向 Direction of rotation	逆時針, 從引線端看 Counter clockwise, see on the leads
電機防護等級 Type of protection	IP54
安裝位置 Mounting position	豎直, 水平線2個方向 Horizontal or Vertical
工作制 Operation Mode	(S1)
軸承 Bearings	免維護軸承 Maintenance-free ball bearings
電器特性 Technical features	控制信號輸入: 0-10V DC/PWM; 控制信號輸入: 4-20mA; RS485通訊; 速度反饋信號; 報警信號繼電器; 雙路輔助電源; 10V DC ± 10%, max.10mA; 20V DC ± 10%; max.50mA Control input 0-10V DC/PWM; Control input 4-20mA; BUS RS485; Speed signal feedback; Dual auxiliary output power supplies: 10VDC ± 10%, max.10mA, 20VDC ± 10% Max.50mA
保護 Protection	限流、堵轉、軟啟動、缺相故障、過溫保護、過欠壓保護 Current limitation, Stall protection, Soft start protection, Open phase protection, Overheating protection, Over Under voltage protection
產品符合的認證 Approvals	CQC、CE、UL 認證 CQC, CE, UL certified
環境溫度 Amb.Temp	-25~+60°C
絕緣等級 Insulation class	F

註: 風機數據為換算到標準大氣壓20°C, 配浦力特導風圈測試時的性能。
Note: Fan data is converted to standard atmospheric pressure at 20°C, with Pulite wall plate test performance.

型號 MODEL	電壓 Voltage (V)	頻率 Frequency (Hz)	功率 Power (W)	風量 Airflow (m³/h)	電流 Current (A)	轉速 RPM (r/min)	噪音 Noise (dB(A))	接線圖 Wiring Diagram
PMDWF112L60-B450×210 U	1~230	50/60	710	A	3.1	1500	80	64
PMSWF112L60-B450×210 U	3~400	50/60	860	B	1.53	1600	83	65

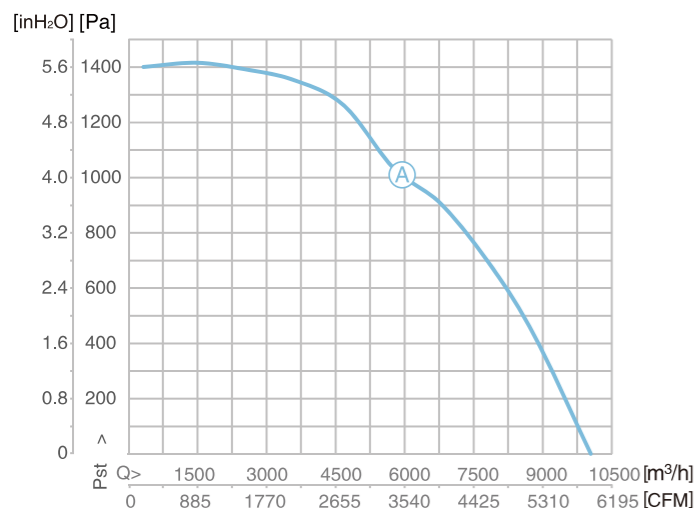
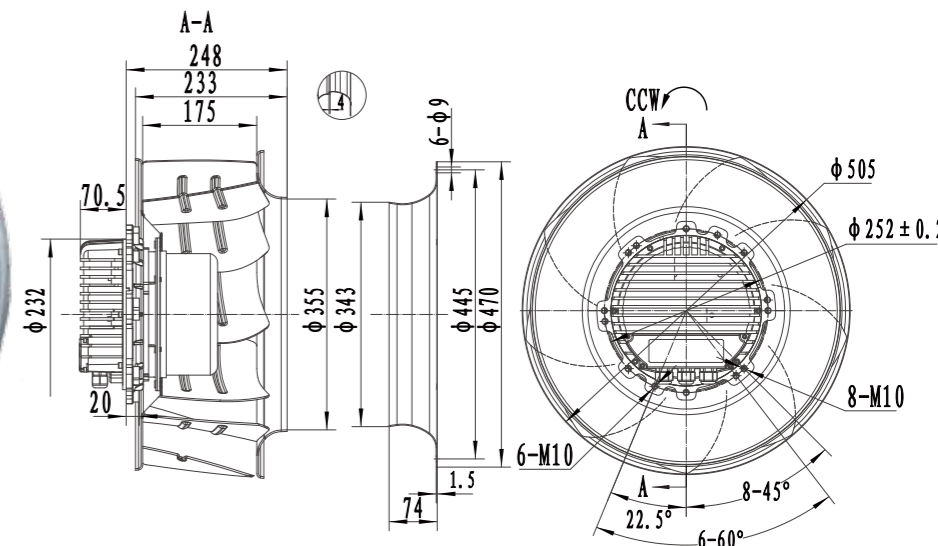
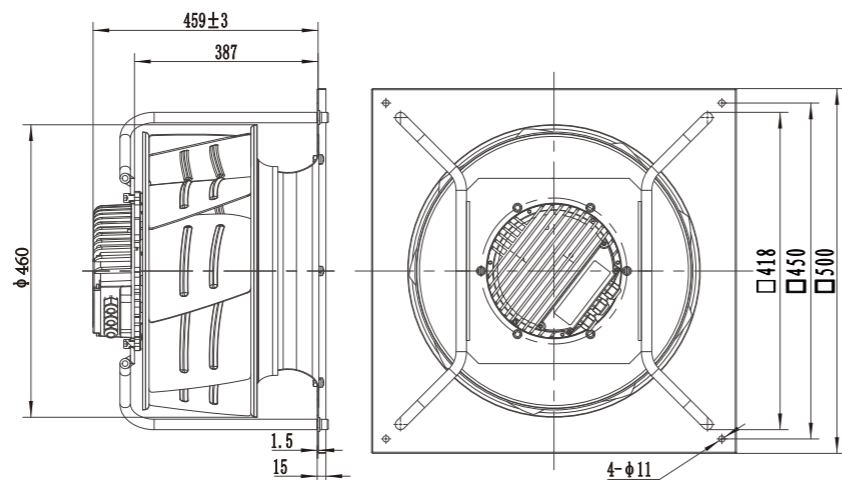
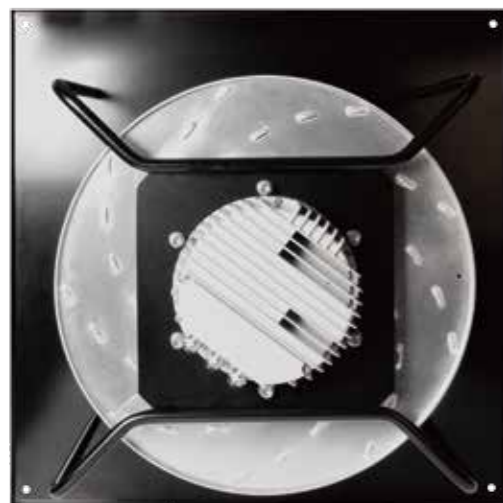
型號 MODEL	電壓 Voltage (V)	頻率 Frequency (Hz)	功率 Power (W)	風量 Airflow (m³/h)	電流 Current (A)	轉速 RPM (r/min)	噪音 Noise (dB(A))	接線圖 Wiring Diagram
PMSWF150L50-B400×230	3~400	50/60	1840	A	2.85	2450	87	66

Ø400 EC CENTRIFUGAL FAN

EC外轉子離心機

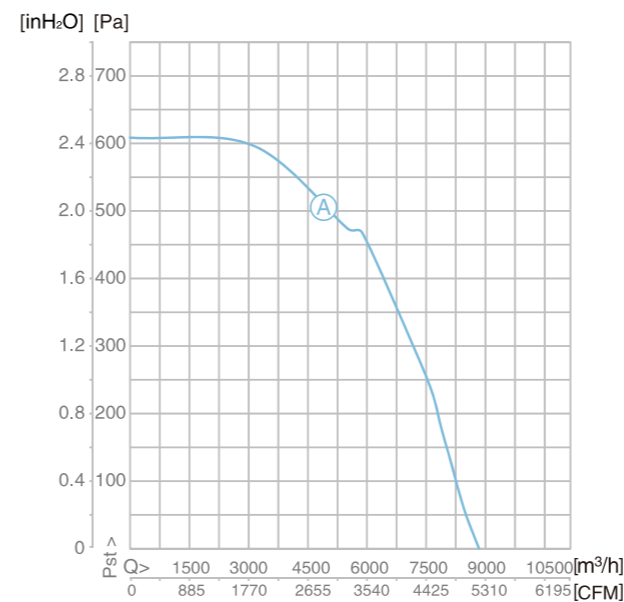
EC外轉子離心機

Ø500 EC CENTRIFUGAL FAN



註:風機數據為換算到標準大氣壓20°C,配浦力特導風圈測試時的性能。
Note: Fan data is converted to standard atmospheric pressure at 20°C, with Pulite wall plate test performance.

材料 Material	風輪-鋁合金; 轉子-鍍黑; 電氣罩-壓鑄鋁 Blade: Aluminum; Rotor-Black; Coated in black; Electronenclosure: Die-cast aluminum
轉向 Direction of rotation	逆時針, 從引線端看(吸風) Counter clockwise, see on the leads(Suction)
電機防護等級 Type of protection	IP54
安裝位置 Mounting position	豎直, 水平線2個方向 Horizontal or Vertical
工作制 Operation Mode	(S1)
軸承 Bearings	免維護軸承 Maintenance-free ball bearings
電器特性 Technical features	控制信號輸入: 0-10V DC/PWM; 控制信號輸入: 4-20mA; RS485通訊; 速度反饋信號; 報警信號繼電器; 雙路輔助電源; 10V DC ± 10%, max.10mA; 20V DC ± 10%; max.50mA Control input 0-10V DC/PWM; Control input 4-20mA; BUS RS485; Speed signal feedback; Dual auxiliary output power supplies: 10VDC ± 10%, max.10mA, 20VDC ± 10% Max 50mA
保護 Protection	限流、堵轉、軟啟動、缺相故障、過溫保護、過欠壓保護 Current limitation, Stall protection, Soft start protection, Open phase protection, Overheating protection, Over Under voltage protection
產品符合的認證 Approvals	CQC、CE、UL 認證 CQC, CE, UL certified
環境溫度 Amb.Temp	-25~+60°C
絕緣等級 Insulation class	F



註:風機數據為換算到標準大氣壓20°C,配浦力特導風圈測試時的性能。
Note: Fan data is converted to standard atmospheric pressure at 20°C, with Pulite wall plate test performance.

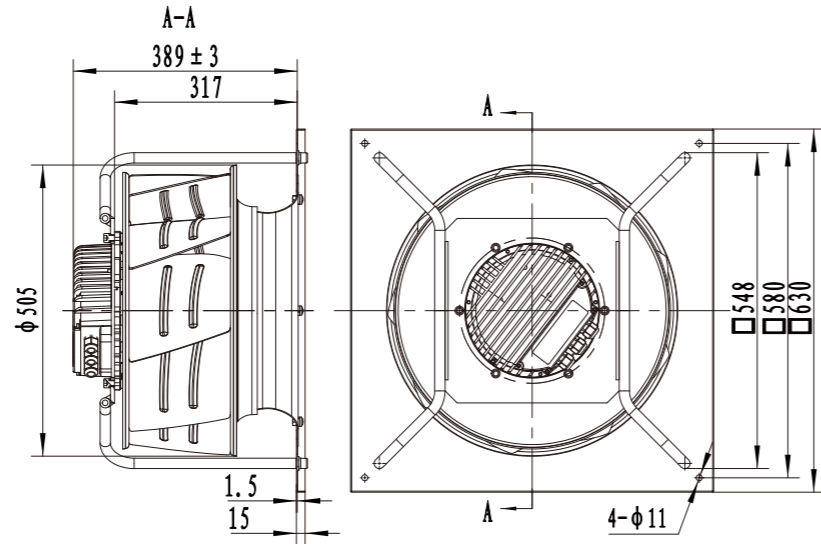
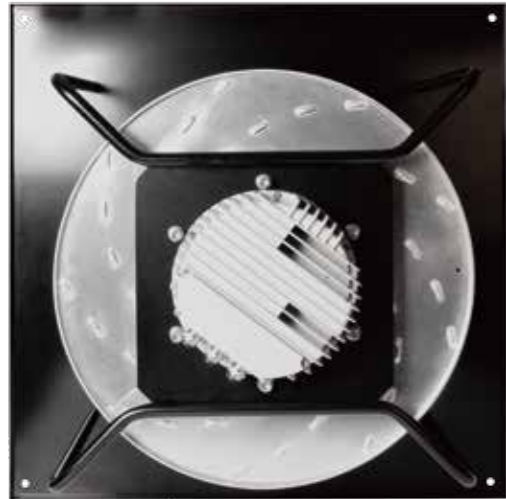
材料 Material	風輪-鋁合金; 轉子-鍍黑; 電氣罩-壓鑄鋁 Blade: Aluminum; Rotor-Black; Coated in black; Electronenclosure: Die-cast aluminum
轉向 Direction of rotation	逆時針, 從引線端看(吸風) Counter clockwise, see on the leads(Suction)
電機防護等級 Type of protection	IP54
安裝位置 Mounting position	豎直, 水平線2個方向 Horizontal or Vertical
工作制 Operation Mode	(S1)
軸承 Bearings	免維護軸承 Maintenance-free ball bearings
電器特性 Technical features	控制信號輸入: 0-10V DC/PWM; 控制信號輸入: 4-20mA; RS485通訊; 速度反饋信號; 報警信號繼電器; 雙路輔助電源; 10V DC ± 10%, max.10mA; 20V DC ± 10%; max.50mA Control input 0-10V DC/PWM; Control input 4-20mA; BUS RS485; Speed signal feedback; Dual auxiliary output power supplies: 10VDC ± 10%, max.10mA, 20VDC ± 10% Max 50mA
保護 Protection	限流、堵轉、軟啟動、缺相故障、過溫保護、過欠壓保護 Current limitation, Stall protection, Soft start protection, Open phase protection, Overheating protection, Over Under voltage protection
產品符合的認證 Approvals	CQC、CE、UL 認證 CQC, CE, UL certified
環境溫度 Amb.Temp	-25~+60°C
絕緣等級 Insulation class	F

型號 MODEL	電壓 Voltage (V)	頻率 Frequency (Hz)	功率 Power (W)	風量 Airflow (m³/h)	電流 Current (A)	轉速 RPM (r/min)	噪音 Noise (dB(A))	接線圖 Wiring Diagram
PMSWF150L50-B400×230 U	3~400	50/60	1840	Ⓐ	2.85	2450	87	66

型號 MODEL	電壓 Voltage (V)	頻率 Frequency (Hz)	功率 Power (W)	風量 Airflow (m³/h)	電流 Current (A)	轉速 RPM (r/min)	噪音 Noise (dB(A))	接線圖 Wiring Diagram
PMSWF150L50-B500×230	3~400	50/60	1014	Ⓐ	1.84	1400	87	66

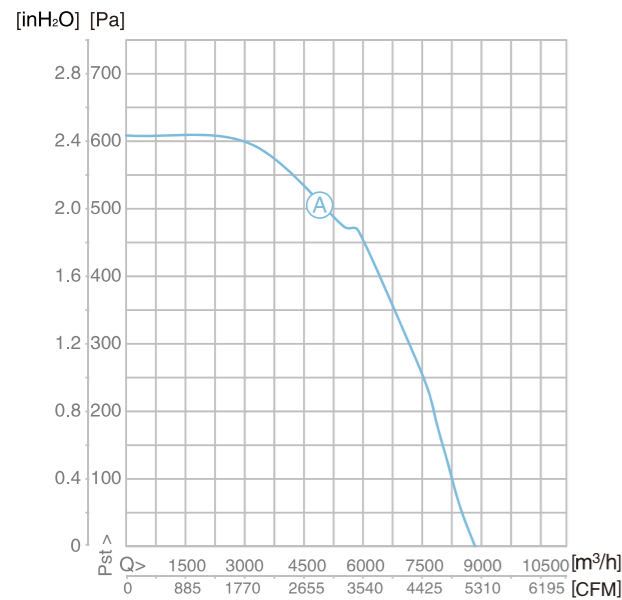
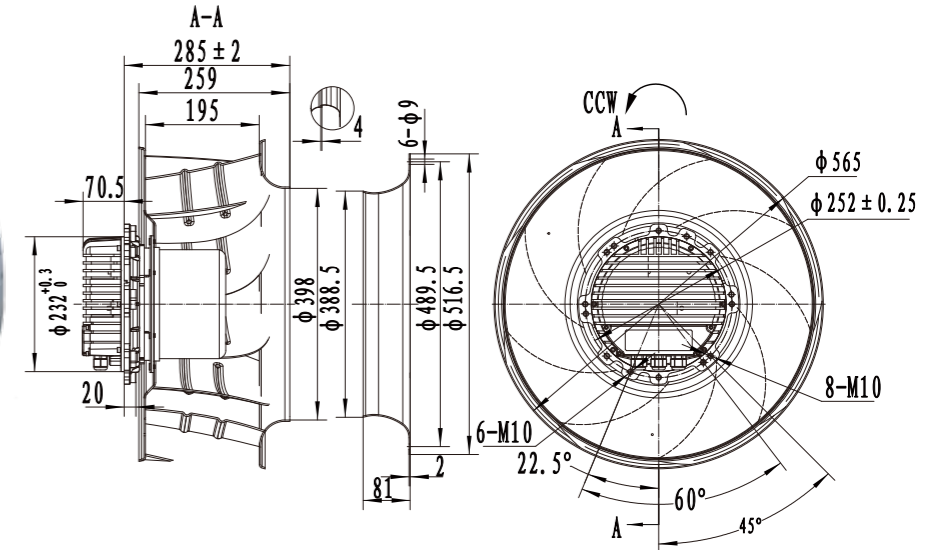
Ø500 EC CENTRIFUGAL FAN

EC外轉子離心機



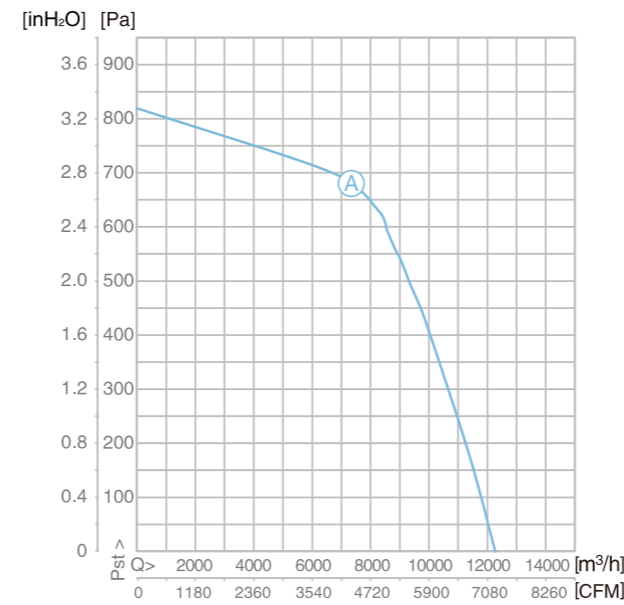
EC外轉子離心機

Ø560 EC CENTRIFUGAL FAN



材料 Material	風輪-鋁合金; 轉子-鍍黑; 電氣罩-壓鑄鋁 Blade: Aluminum; Rotor-Black; Coated in black; Electronenclosure: Die-cast aluminum
轉向 Direction of rotation	逆時針, 從引線端看(吸風) Counter clockwise, see on the leads(Suction)
電機防護等級 Type of protection	IP54
安裝位置 Mounting position	豎直, 水平線2個方向 Horizontal or Vertical
工作制 Operation Mode	(S1)
軸承 Bearings	免維護軸承 Maintenance-free ball bearings
電器特性 Technical features	控制信號輸入: 0-10V DC/PWM; 控制信號輸入: 4-20mA; RS485通訊; 速度反饋信號; 報警信號繼電器; 雙路輔助電源: 10V DC ± 10%, max.10mA; 20V DC ± 10%; max.50mA Control input 0-10V DC/PWM; Control input 4-20mA; BUS RS485; Speed signal feedback; Dual auxiliary output power supplies: 10VDC±10%, max.10mA, 20VDC±10% Max 50mA
保護 Protection	限流、堵轉、軟啟動、缺相故障、過溫保護、過欠壓保護 Current limitation, Stall protection, Soft start protection, Open phase protection, Overheating protection, Over Under voltage protection
產品符合的認證 Approvals	CQC、CE、UL 認證 CQC, CE, UL certified
環境溫度 Amb.Temp	-25~+60°C
絕緣等級 Insulation class	F

註:風機數據為換算到標準大氣壓20°C,配浦力特導風圈測試時的性能。
Note: Fan data is converted to standard atmospheric pressure at 20°C, with Pulite wall plate test performance.



材料 Material	風輪-鋁合金; 轉子-鍍黑; 電氣罩-壓鑄鋁 Blade: Aluminum; Rotor-Black; Coated in black; Electronenclosure: Die-cast aluminum
轉向 Direction of rotation	逆時針, 從引線端看(吸風) Counter clockwise, see on the leads(Suction)
電機防護等級 Type of protection	IP54
安裝位置 Mounting position	豎直, 水平線2個方向 Horizontal or Vertical
工作制 Operation Mode	(S1)
軸承 Bearings	免維護軸承 Maintenance-free ball bearings
電器特性 Technical features	控制信號輸入: 0-10V DC/PWM; 控制信號輸入: 4-20mA; RS485通訊; 速度反饋信號; 報警信號繼電器; 雙路輔助電源: 10V DC ± 10%, max.10mA; 20V DC ± 10%; max.50mA Control input 0-10V DC/PWM; Control input 4-20mA; BUS RS485; Speed signal feedback; Dual auxiliary output power supplies: 10VDC±10%, max.10mA, 20VDC±10% Max 50mA
保護 Protection	限流、堵轉、軟啟動、缺相故障、過溫保護、過欠壓保護 Current limitation, Stall protection, Soft start protection, Open phase protection, Overheating protection, Over Under voltage protection
產品符合的認證 Approvals	CQC、CE、UL 認證 CQC, CE, UL certified
環境溫度 Amb.Temp	-25~+60°C
絕緣等級 Insulation class	F

註:風機數據為換算到標準大氣壓20°C,配浦力特導風圈測試時的性能。
Note: Fan data is converted to standard atmospheric pressure at 20°C, with Pulite wall plate test performance.

型號 MODEL	電壓 Voltage (V)	頻率 Frequency (Hz)	功率 Power (W)	風量 Airflow (m³/h)	電流 Current (A)	轉速 RPM (r/min)	噪音 Noise (dB(A))	接線圖 Wiring Diagram
PMSWF150L50-B500×230 U	3~400	50/60	1014	Ⓐ	1.84	1400	87	P66

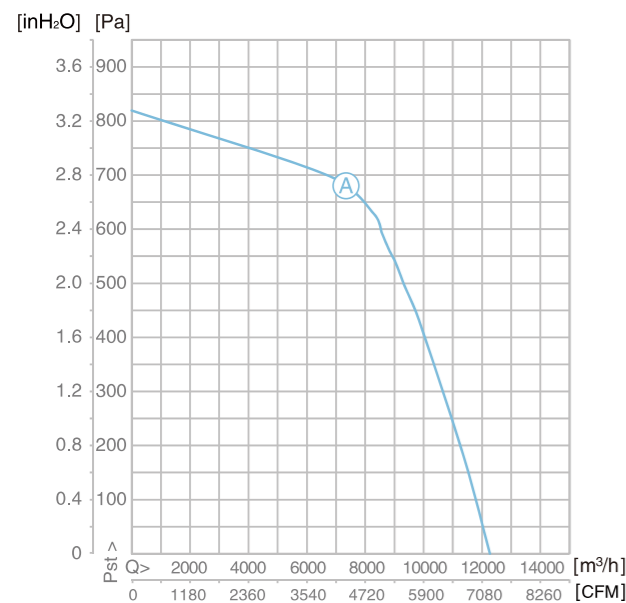
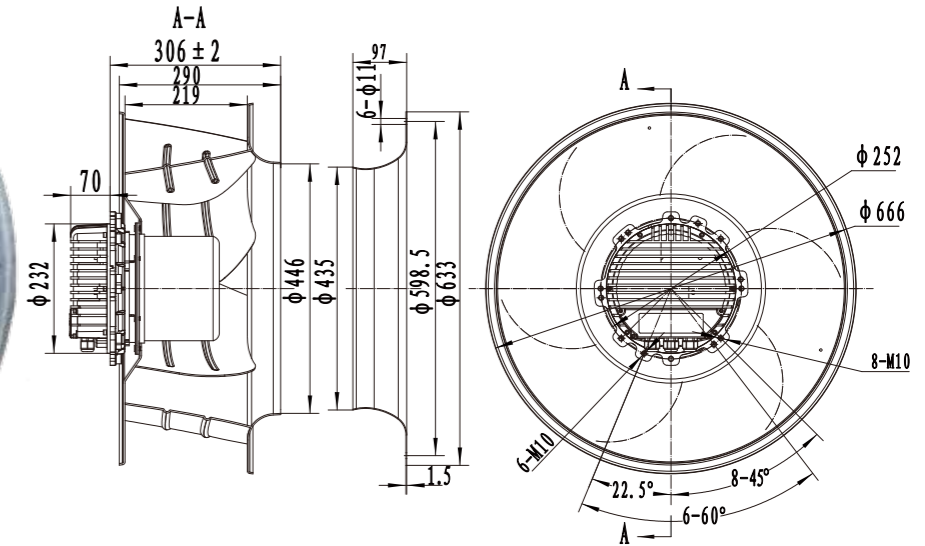
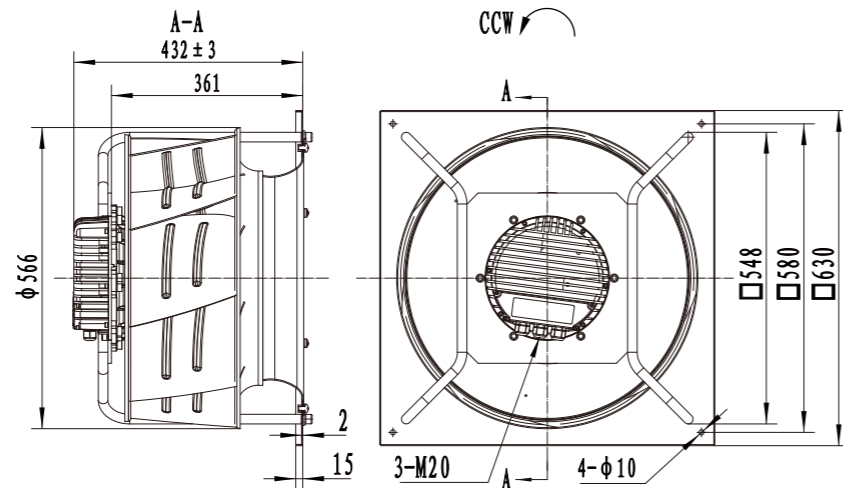
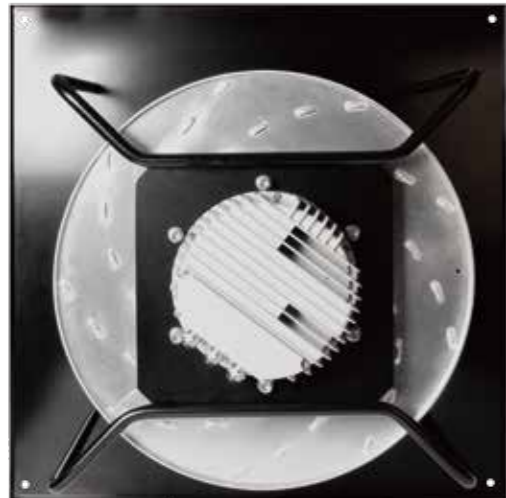
型號 MODEL	電壓 Voltage (V)	頻率 Frequency (Hz)	功率 Power (W)	風量 Airflow (m³/h)	電流 Current (A)	轉速 RPM (r/min)	噪音 Noise (dB(A))	接線圖 Wiring Diagram
PMSWF150L85-B560×260	3~400	50/60	1783	Ⓐ	2.93	1400	78	P66

Ø560 EC CENTRIFUGAL FAN

EC外轉子離心機

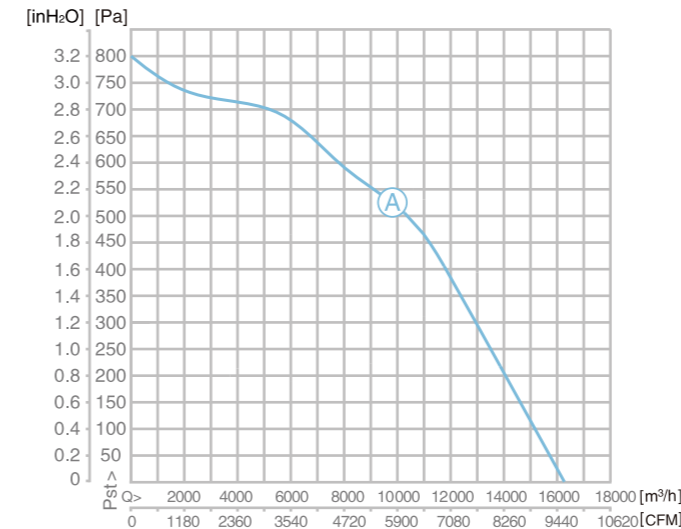
EC外轉子離心機

Ø630 EC CENTRIFUGAL FAN



材料 Material	風輪-鋁合金; 轉子-鍍黑; 電氣罩-壓鑄鋁 Blade: Aluminum; Rotor-Black; Coated in black; Electron enclosure: Die-cast aluminum
轉向 Direction of rotation	逆時針, 從引線端看(吸風) Counter clockwise, see on the leads(Suction)
電機防護等級 Type of protection	IP54
安裝位置 Mounting position	豎直, 水平線2個方向 Horizontal or Vertical
工作制 Operation Mode	(S1)
軸承 Bearings	免維護軸承 Maintenance-free ball bearings
電器特性 Technical features	控制信號輸入: 0-10V DC/PWM; 控制信號輸入: 4-20mA; RS485通訊; 速度反饋信號; 報警信號繼電器; 雙路輔助電源; 10V DC ± 10%, max.10mA; 20V DC ± 10%; max.50mA Control input 0-10V DC/PWM; Control input 4-20mA; BUS RS485; Speed signal feedback; Dual auxiliary output power supplies: 10VDC±10%, max.10mA, 20VDC±10% Max 50mA
保護 Protection	限流、堵轉、軟啟動、缺相故障、過溫保護、過欠壓保護 Current limitation, Stall protection, Soft start protection, Open phase protection, Overheating protection, Over Under voltage protection
產品符合的認證 Approvals	CQC、CE、UL 認證 CQC, CE, UL certified
環境溫度 Amb. Temp	-25~+60°C
絕緣等級 Insulation class	F

註: 風機數據為換算到標準大氣壓20°C, 配浦力特導風圈測試時的性能。
Note: Fan data is converted to standard atmospheric pressure at 20°C, with Pulite wall plate test performance.



註: 風機數據為換算到標準大氣壓20°C, 配浦力特導風圈測試時的性能。
Note: Fan data is converted to standard atmospheric pressure at 20°C, with Pulite wall plate test performance.

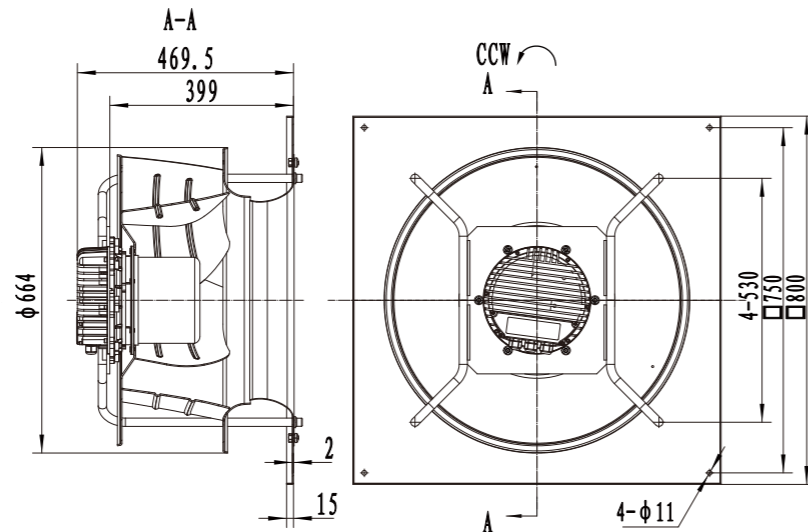
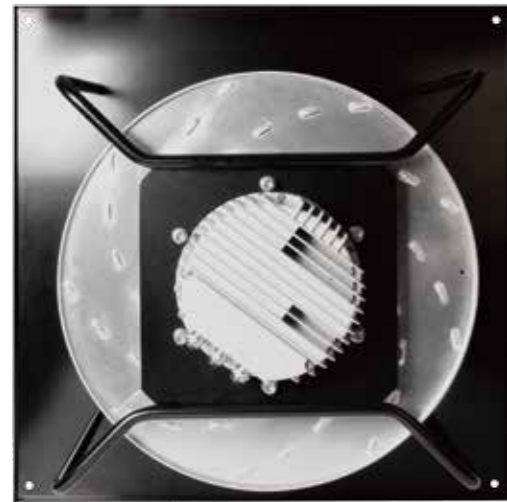
材料 Material	風輪-鋁合金; 轉子-鍍黑; 電氣罩-壓鑄鋁 Blade: Aluminum; Rotor-Black; Coated in black; Electron enclosure: Die-cast aluminum
轉向 Direction of rotation	逆時針, 從引線端看(吸風) Counter clockwise, see on the leads(Suction)
電機防護等級 Type of protection	IP54
安裝位置 Mounting position	豎直, 水平線2個方向 Horizontal or Vertical
工作制 Operation Mode	(S1)
軸承 Bearings	免維護軸承 Maintenance-free ball bearings
電器特性 Technical features	控制信號輸入: 0-10V DC/PWM; 控制信號輸入: 4-20mA; RS485通訊; 速度反饋信號; 報警信號繼電器; 雙路輔助電源; 10V DC ± 10%, max.10mA; 20V DC ± 10%; max.50mA Control input 0-10V DC/PWM; Control input 4-20mA; BUS RS485; Speed signal feedback; Dual auxiliary output power supplies: 10VDC±10%, max.10mA, 20VDC±10% Max 50mA
保護 Protection	限流、堵轉、軟啟動、缺相故障、過溫保護、過欠壓保護 Current limitation, Stall protection, Soft start protection, Open phase protection, Overheating protection, Over Under voltage protection
產品符合的認證 Approvals	CQC、CE、UL 認證 CQC, CE, UL certified
環境溫度 Amb. Temp	-25~+60°C
絕緣等級 Insulation class	F

型號 MODEL	電壓 Voltage (V)	頻率 Frequency (Hz)	功率 Power (W)	風量 Airflow (m³/h)	電流 Current (A)	轉速 RPM (r/min)	噪音 Noise (dB(A))	接線圖 Wiring Diagram
PMSWF150L85-B560×260 U	3~400	50/60	1783	Ⓐ	2.93	1400	78	P66

型號 MODEL	電壓 Voltage (V)	頻率 Frequency (Hz)	功率 Power (W)	風量 Airflow (m³/h)	電流 Current (A)	轉速 RPM (r/min)	噪音 Noise (dB(A))	接線圖 Wiring Diagram
PMSWF150L85-B630×290	3~400	50/60	1936	Ⓐ	3.22	1200	80	P66

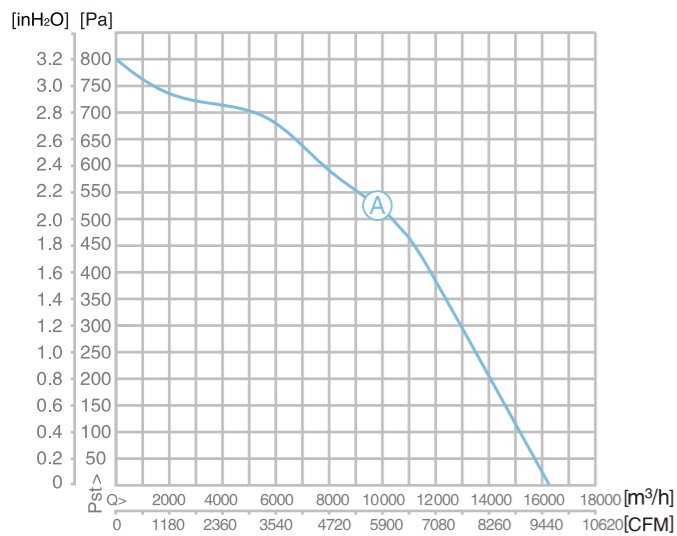
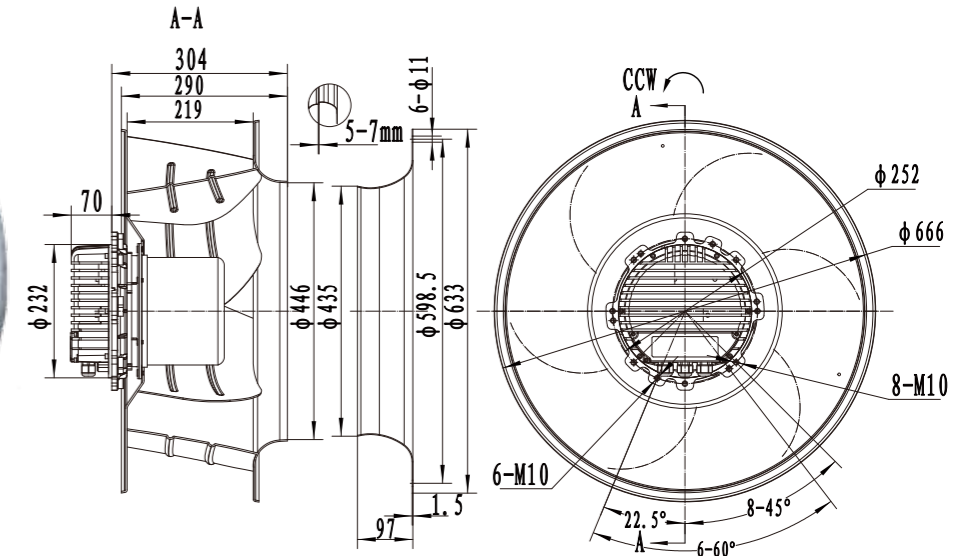
Ø630 EC CENTRIFUGAL FAN

EC外轉子離心機



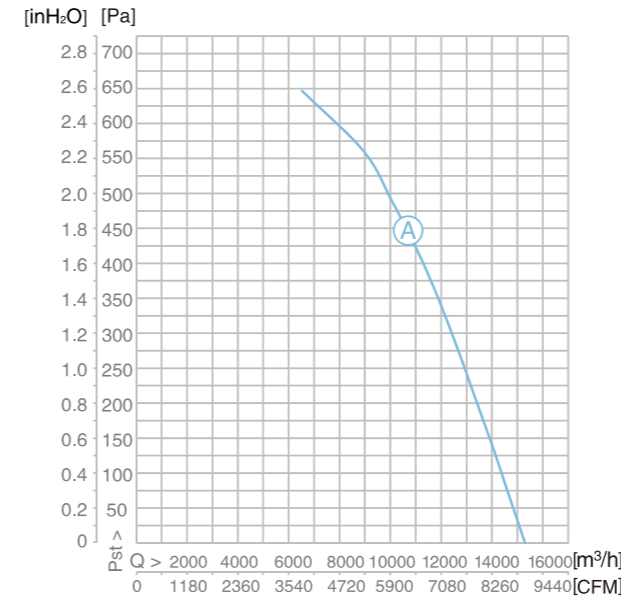
EC外轉子離心機

Ø630 EC CENTRIFUGAL FAN



註:風機數據為換算到標準大氣壓20°C,配浦力特導風圈測試時的性能。
Note: Fan data is converted to standard atmospheric pressure at 20°C, with Pulite wall plate test performance.

材料 Material	風輪-鋁合金; 轉子-鍍黑; 電氣罩-壓鑄鋁 Blade: Aluminum; Rotor-Black; Coated in black; Electronenclosure: Die-cast aluminum
轉向 Direction of rotation	逆時針, 從引線端看(吸風) Counter clockwise, see on the leads(Suction)
電機防護等級 Type of protection	IP54
安裝位置 Mounting position	豎直, 水平線2個方向 Horizontal or Vertical
工作制 Operation Mode	(S1)
軸承 Bearings	免維護軸承 Maintenance-free ball bearings
電器特性 Technical features	控制信號輸入: 0-10V DC/PWM; 控制信號輸入: 4-20mA; RS485通訊; 速度反饋信號; 報警信號繼電器; 雙路輔助電源: 10V DC ± 10%, max.10mA; 20V DC ± 10%; max.50mA Control input 0-10V DC/PWM; Control input 4-20mA; BUS RS485; Speed signal feedback; Dual auxiliary output power supplies: 10VDC±10%, max.10mA, 20VDC±10% Max 50mA
保護 Protection	限流、堵轉、軟啟動、缺相故障、過溫保護、過欠壓保護 Current limitation, Stall protection, Soft start protection, Open phase protection, Overheating protection, Over Under voltage protection
產品符合的認證 Approvals	CQC、CE、UL 認證 CQC, CE, UL certified
環境溫度 Amb. Temp	-25~+60°C
絕緣等級 Insulation class	F



註:風機數據為換算到標準大氣壓20°C,配浦力特導風圈測試時的性能。
Note: Fan data is converted to standard atmospheric pressure at 20°C, with Pulite wall plate test performance.

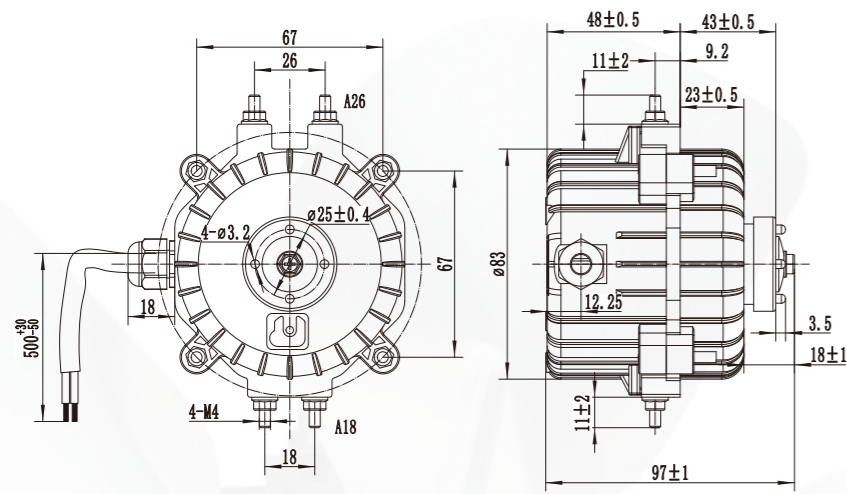
材料 Material	風輪-鋁合金; 轉子-鍍黑; 電氣罩-壓鑄鋁 Blade: Aluminum; Rotor-Black; Coated in black; Electronenclosure: Die-cast aluminum
轉向 Direction of rotation	逆時針, 從引線端看(吸風) Counter clockwise, see on the leads(Suction)
電機防護等級 Type of protection	IP54
安裝位置 Mounting position	豎直, 水平線2個方向 Horizontal or Vertical
工作制 Operation Mode	(S1)
軸承 Bearings	免維護軸承 Maintenance-free ball bearings
電器特性 Technical features	控制信號輸入: 0-10V DC/PWM; 控制信號輸入: 4-20mA; RS485通訊; 速度反饋信號; 報警信號繼電器; 雙路輔助電源: 10V DC ± 10%, max.10mA; 20V DC ± 10%; max.50mA Control input 0-10V DC/PWM; Control input 4-20mA; BUS RS485; Speed signal feedback; Dual auxiliary output power supplies: 10VDC±10%, max.10mA, 20VDC±10% Max 50mA
保護 Protection	限流、堵轉、軟啟動、缺相故障、過溫保護、過欠壓保護 Current limitation, Stall protection, Soft start protection, Open phase protection, Overheating protection, Over Under voltage protection
產品符合的認證 Approvals	CQC、CE、UL 認證 CQC, CE, UL certified
環境溫度 Amb. Temp	-25~+60°C
絕緣等級 Insulation class	F

型號 MODEL	電壓 Voltage (V)	頻率 Frequency (Hz)	功率 Power (W)	風量 Airflow (m ³ /h)	電流 Current (A)	轉速 RPM (r/min)	噪音 Noise (dB(A))	接線圖 Wiring Diagram
PMSWF150L85-B630x290 U	3~400	50/60	1936	Ⓐ	3.22	1200	80	P66

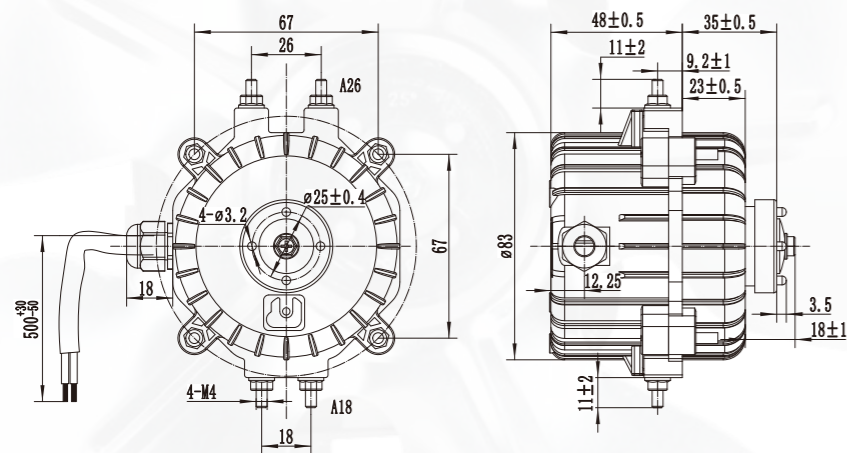
型號 MODEL	電壓 Voltage (V)	頻率 Frequency (Hz)	功率 Power (W)	風量 Airflow (m ³ /h)	電流 Current (A)	轉速 RPM (r/min)	噪音 Noise (dB(A))	接線圖 Wiring Diagram
PMSWF150L105-B630x290	3~400	50/60	1955	Ⓐ	3.16	1200	80	P66

EC35 SERIES ENERGY SAVING MOTOR EC 35系列節能電機

材料 Material	風輪 - 採用鋁鎂合金製成 Blade: Aluminum; Rotor-Black; Coated in black; Electron enclosure: Die-cast aluminum
電機防護等級 Type of protection	IP65
安裝位置 Mounting position	豎直, 水平線2個方向 Horizontal or Vertical
連續工作制 Operation Mode	S1
軸承 Bearings	免維護軸承 Maintenance-free ball bearings
保護 Protection	限流、堵轉、軟啟動、缺相故障、過溫保護、過欠壓保護 Current limitation, Stall protection, Soft start protection, Open phase protection, Overheating protection, Over/ Under voltage protection
產品符合的認證 Approvals	CQC、CE 認證 CQC, CE certified
環境溫度 Amb.Temp	P58 風機配合運行參數 P58 Aluminum blade parameter
絕緣等級 Insulation class	F

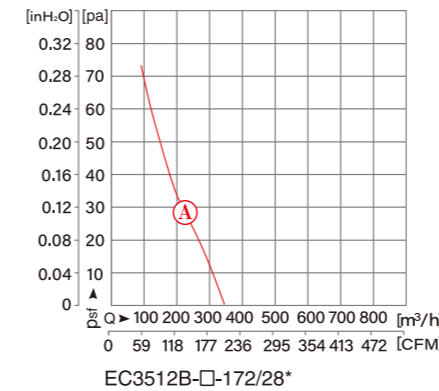


EC3520A1826

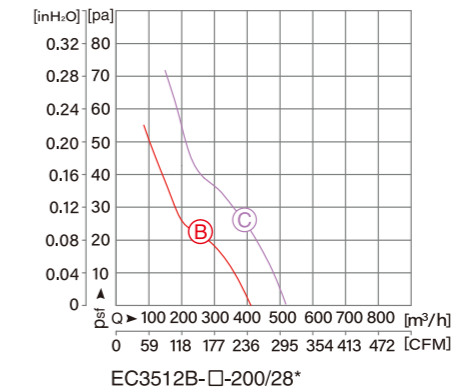


EC3512A1826

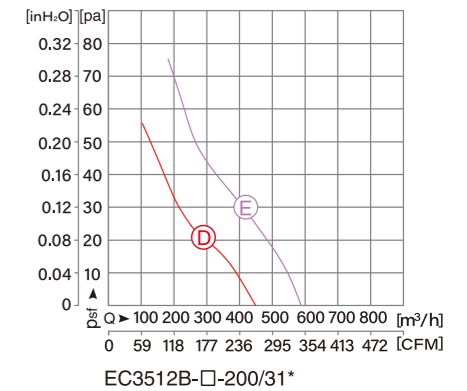
EC 35曲線 EC35 CURVE



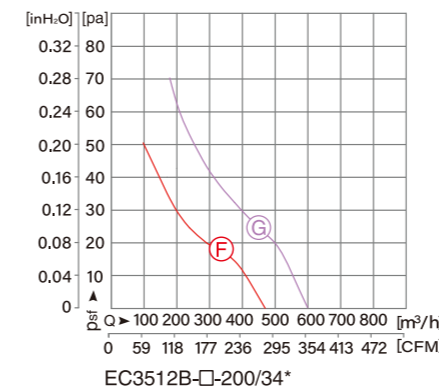
EC3512B-□-172/28*



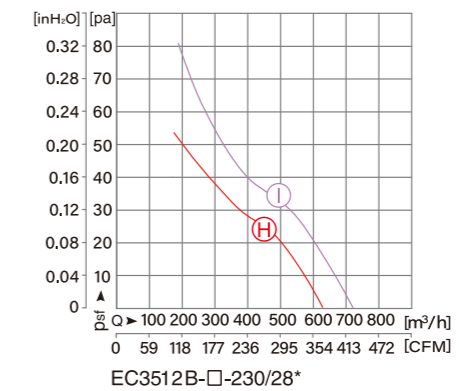
EC3512B-□-200/28*



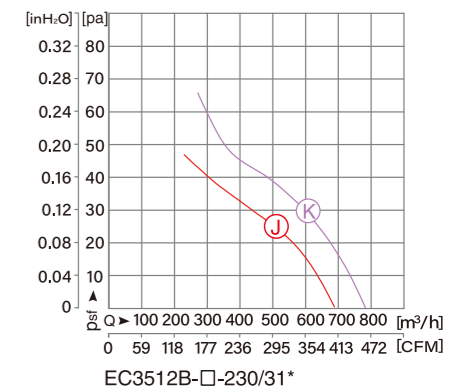
EC3512B-□-200/31*



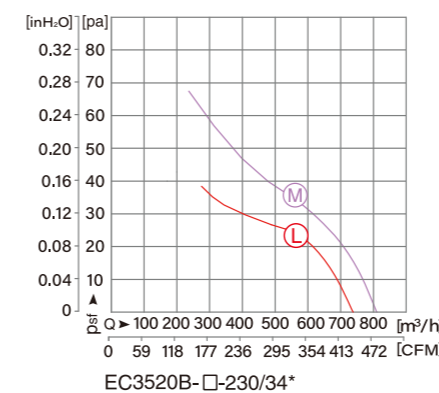
EC3512B-□-200/34*



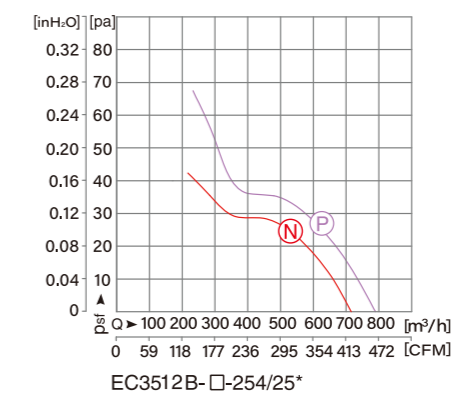
EC3512B-□-230/28*



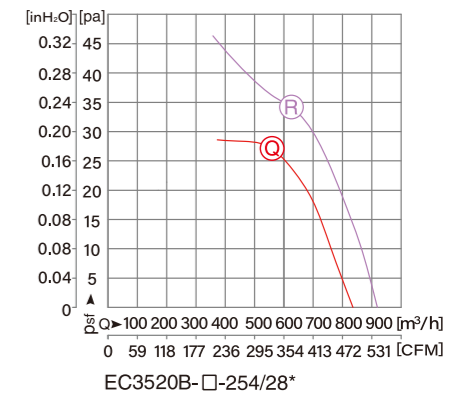
EC3512B-□-230/31*



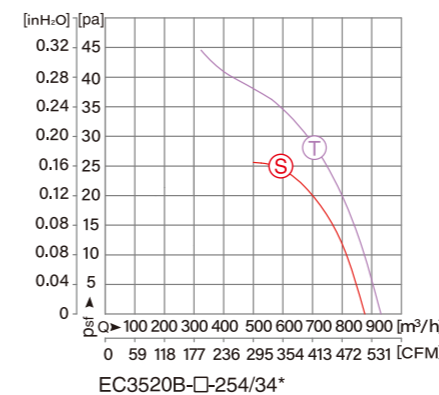
EC3520B-□-230/34*



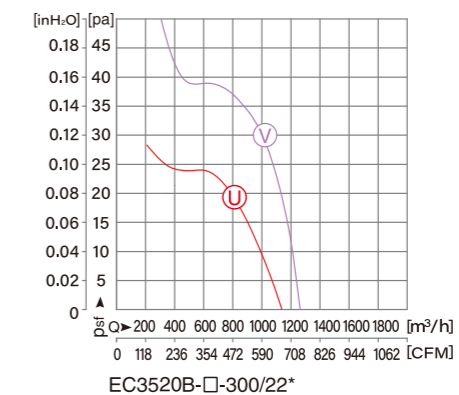
EC3512B-□-254/25*



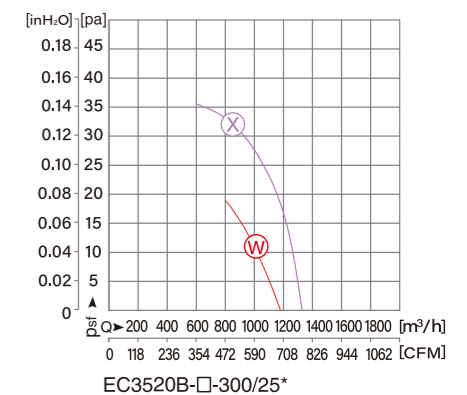
EC3520B-□-254/28*



EC3520B-□-254/34*

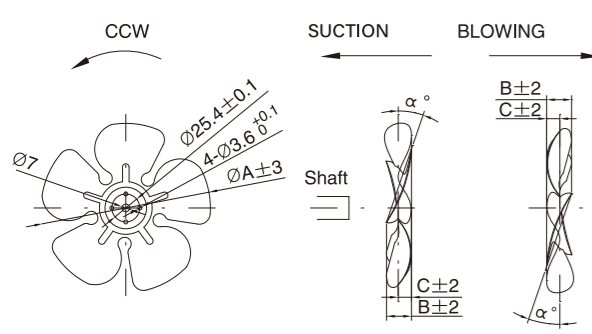


EC3520B-□-300/22*



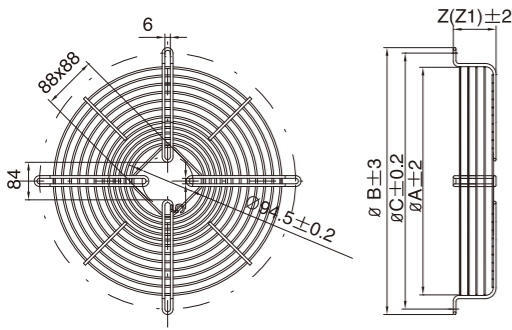
EC3520B-□-300/25*

風葉葉片 Fan Blade



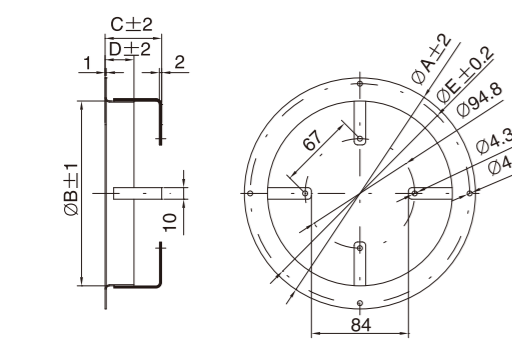
FAN TYPE	A	B	19°		22°		25°		28°		31°		34°	
			B	C	B	C	B	C	B	C	B	C	B	C
Φ154	154	23	12	26	13	29	15	32	17	36	18	39	21	
Φ172	172	25	13	28	14	31	16	34	17	38	18	41	21	
Φ200	200	27	14	30	15	33	17	36	19	40	21	43	24	
Φ230	230	30	15	33	16	36	19	39	21	42	20	45	23	
Φ254	254	32	15	35	16	38	18	41	21	44	22	47	23	
Φ300	300	31	16	35	17	41	22	44	22	48	25	52	27	

網罩 Grid



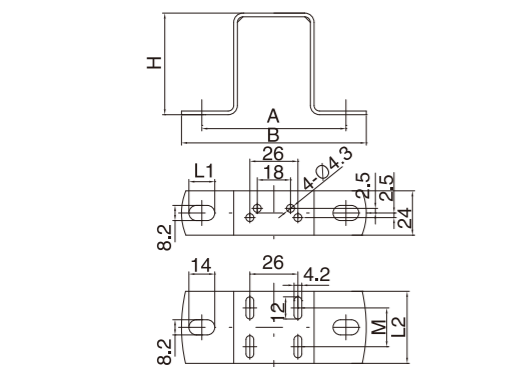
TYPE	A	B	C	Z	Z1
Φ154	170	202	190	11	37
Φ172	188	220	208	11	37
Φ200	214	248	236	25	40
Φ230	246	278	266	27	40
Φ254	270	302	290	17	40
Φ300	324	356	344	17	50

法蘭 Ring



TYPE	A	B	C	D	E
Φ154	200	162	49	25	190
Φ172	223	180	49	25	208
Φ200	246	208	49	25	236
Φ230	278	238	49	25	266
Φ254	300	268	49	25	290
Φ300	378	308	49	30	365

支架 Bracket

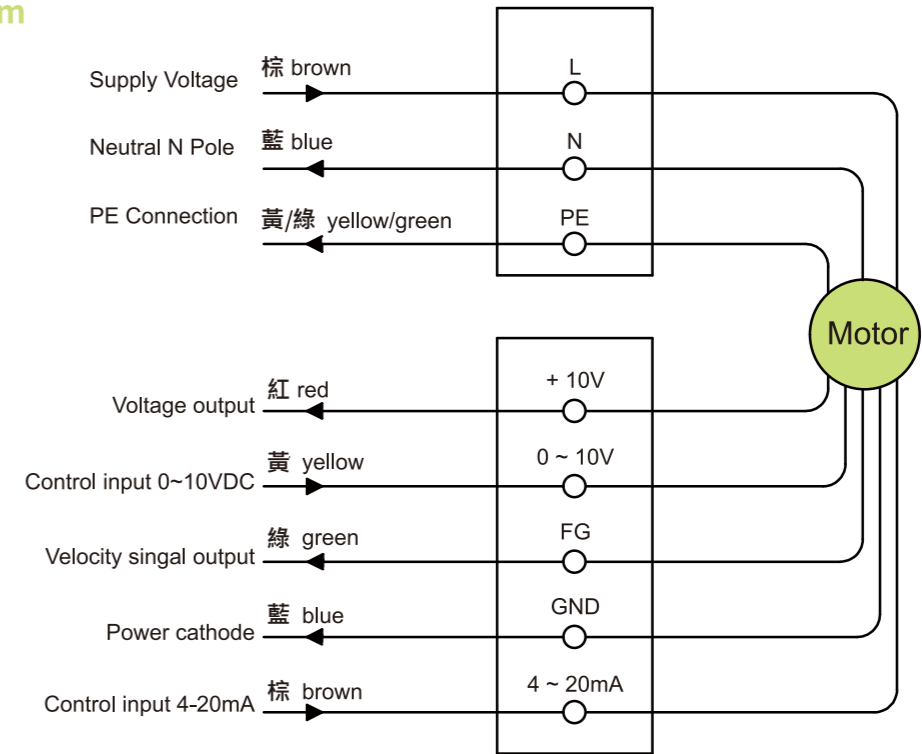


TYPE	H	A	B	L1	L2	M
H39	39	78	100	14	-	-
H55	55	81	106	13	-	-
H72	72	81	106	13	-	-
H84	84	81	106	20	-	-
H109-1	109	81	106	14	-	-
H109-2	109	78	100	14	39	21
H109-3	109	78	100	14	49	29

EC074-230V電機系列接線說明圖

EC 074-230V SERIES MOTOR WIRING INSTRUCTION

Wiring diagram
接線標誌圖



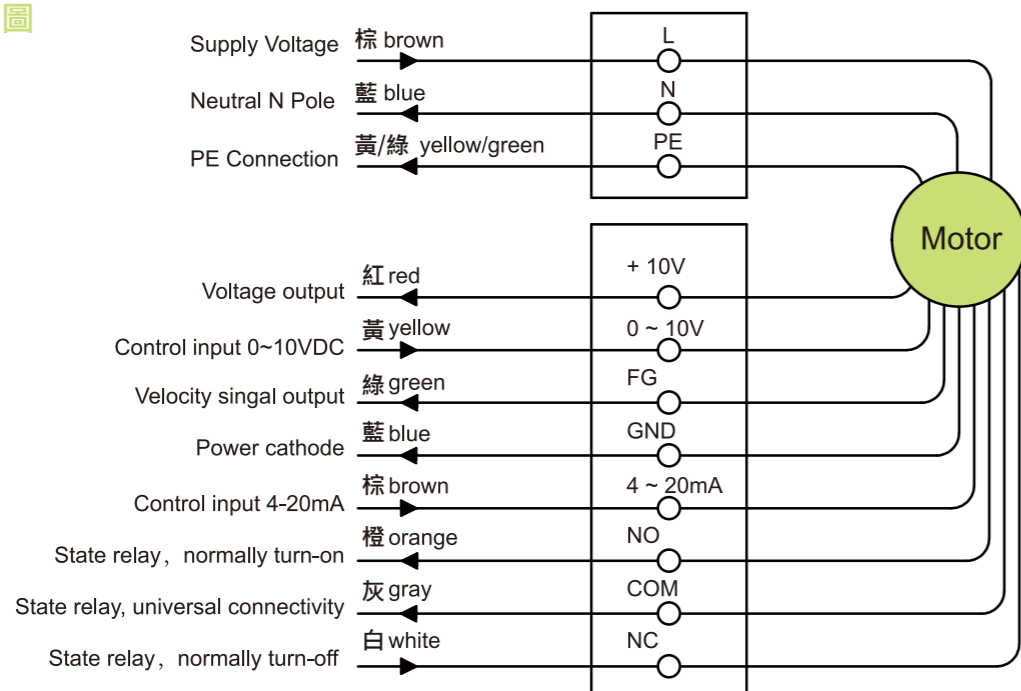
Portal function

接線端口功能說明圖

序號 HUB	信號 Portal	分配/功能 Description/Function	序號 HUB	信號 Portal	分配/功能 Description/Function
P1	L	交流電輸入, 供給電壓 1~198-277V ;50/60Hz Mains supply connection, supply voltage 1~198-277VAC;50/60Hz	P2	GND	P2 Sing ground for control interface P2
	N	交流電輸入, 中性線N級 Mains supply connection, Neutral N pole		0~10V/PWM	控制輸入 0~10V DC/PWM Control input 0~10V DC/PWM
	PE	接地線, PE線 Earth connection, PE connection		4~20mA	控制輸入 4.5~20mA Control input 4.5~20mA
			10V	固定電壓輸出 10VDC (±10% max.10mA) Rated voltage output 10VDC (±10% max.10mA)	
			FG	速度反饋信號 Speed Singal Feedback	

EC 084-230V SERIES MOTOR WIRING INSTRUCTION EC084-230V電機系列接線說明圖

Wiring diagram 接線標誌圖

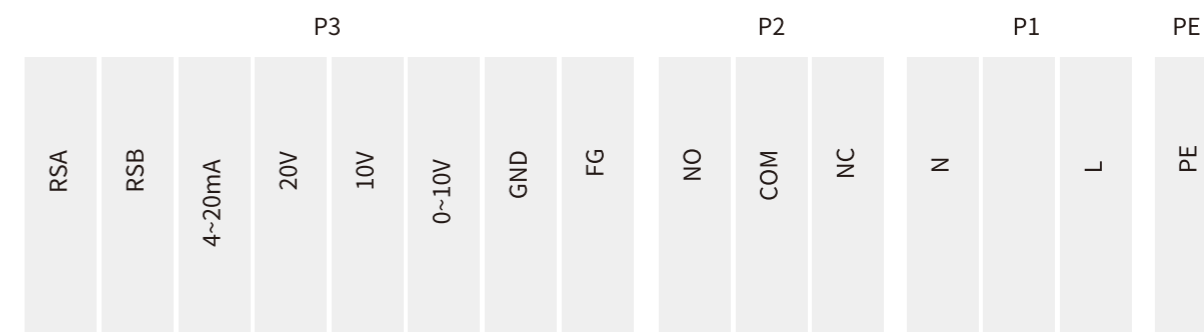


Portal function 接線端口功能說明圖

序號 HUB	信號 Portal	分配/功能 Description/Function
P1	L	交流電輸入, 供給電壓 1~198-277V; 50/60Hz AC power in, 1~198-277VAC; 50/60Hz
	N	交流電輸入, 中性線 N 級 AC power in, Neutral N pole
	PE	接地線, PE 線 Earth connection, PE connection
P2	NO	狀態繼電器, 浮動狀態觸點; 常開; 關閉錯誤 State relay, alterable state contact; normally turn-on; turn-off when error
	COM	狀態繼電器, 公共連接; 連接等級 250VAC/2A State relay, universal connectivity; contact rating 250VAC/2A
	NC	狀態繼電器, 常閉, 解除錯誤 State relay, normally turn-off; turn-on when error
P2	GND	接口 P2 控制信號地線 Sing ground for control interface P2
	0~10V/PWM	控制輸入 0~10V DC/PWM Control input 0~10V DC/PWM
	4~20mA	控制輸入 4.5~20mA Control input 4.5~20mA
	10V	固定電壓輸出 10VDC (±10% max. 10mA) Rated voltage output 10VDC (±10% max. 10mA)
	FG	速度反饋信號 Speed Singal Feedback

EC112-230V電機系列接線說明圖 EC 112-230V SERIES MOTOR WIRING INSTRUCTION

Wiring diagram 接線標誌圖



Portal function 接線端口功能說明圖

序號 HUB	信號 Portal	分配/功能 Description/Function
P1	PE	接地線, PE 線 Earth connection, PE connection
	L	交流電輸入, 供給電壓 1~198-277V; 50/60Hz AC power in, 1~198-277VAC; 50/60Hz
	N	交流電輸入, 中性線 N 級 AC power in, Neutral N pole
P2	NO	狀態繼電器, 浮動狀態觸點; 常開; 關閉錯誤 State relay, alterable state contact; normally turn-on; turn-off when error
	COM	狀態繼電器, 公共連接; 連接等級 250VAC/2A State relay, universal connectivity; contact rating 250VAC/2A
	NC	狀態繼電器, 常閉, 解除錯誤 State relay, normally turn-off; turn-on when error
P3	RSA	RS485 總線連接; RSA; MODBUS 通訊協議 RTU 方式 Bus connection RS485; RSA; MODBUS RTU
	RSB	RS485 總線連接; RSB; MODBUS 通訊協議 RTU 方式 Bus connection RS485; RSB; MODBUS RTU
	GND	接口 P3 控制信號地線 Sing ground for control interface P3
	0~10V/PWM	控制輸入 0~10V DC/PWM Control input 0~10V DC/PWM
	4~20mA	控制輸入 4.5~20mA Control input 4.5~20mA
	20V	固定電壓輸出 20VDC (±10% max. 50mA) Rated voltage output 20VDC (±10% max. 50mA)
10V	固定電壓輸出 10VDC (±10% max. 10mA) Rated voltage output 10VDC (±10% max. 10mA)	
	FG	速度反饋信號 Speed Singal Feedback

EC 112-400V SERIES MOTOR WIRING INSTRUCTION

EC112-400V電機系列接線說明圖

Wiring diagram 接線標誌圖

P3								P2			P1			PE
RSB	RSA	4~20mA	20V	10V	0~10V	GND	FG	NC	COM	NO	L3	L2	L1	PE

Portal function 接線端口功能說明圖

序號 HUB	信號 Portal	分配/功能 Description/Function
P1	PE	接地線, PE線 Earth connection, PE connection
	L3	交流電輸入, 供給電壓 3~380-480V; 50/60Hz AC power in, 3~380-480VAC; 50/60Hz
	L2	交流電輸入, 供給電壓 3~380-480V; 50/60Hz AC power in, 3~380-480VAC; 50/60Hz
	L1	交流電輸入, 供給電壓 3~380-480V; 50/60Hz AC power in, 3~380-480VAC; 50/60Hz
P2	NO	狀態繼電器, 浮動狀態觸點; 常開; 關閉錯誤 State relay, alterable state contact; normally turn-on; turn-off when error
	COM	狀態繼電器, 公共連接; 連接等級 250VAC/2A State relay, universal connectivity; contact rating 250VAC/2A
	NC	狀態繼電器, 常閉, 解除錯誤 State relay, normally turn-off; turn-on when error

序號 HUB	信號 Portal	分配/功能 Description/Function
P3	RSA	RS485總線連接; RSA; MODBUS通訊協議 RTU方式 Bus connection RS485; RSA; MODBUS RTU
	RSB	RS485總線連接; RSB; MODBUS通訊協議 RTU方式 Bus connection RS485; RSB; MODBUS RTU
	GND	接口 P3 控制信號地線 Sing ground for control interface P3
	0~10V/PWM	控制輸入 0~10V DC/PWM Control input 0~10V DC/PWM
	4~20mA	控制輸入 4.5~20mA Control input 4.5~20mA
	20V	固定電壓輸出 20VDC (±10% max.50mA) Rated voltage output 20VDC (±10% max.50mA)
	10V	固定電壓輸出 10VDC (±10% max.10mA) Rated voltage output 10VDC (±10% max.10mA)
	FG	速度反饋信號 Speed Singal Feedback

EC150-400V電機系列接線說明圖

EC 150-400V SERIES MOTOR WIRING INSTRUCTION

Wiring diagram 接線標誌圖

P3											P2			P1			PE	
RSA	RSB	RSA	RSB	GND	Ain1 U	4~20mA	20V	10V	Din1	GND	FG	NO	COM	NC	L3	L2	L1	PE

Portal function 接線端口功能說明圖

序號 HUB	信號 Portal	分配/功能 Description/Function
P1	PE	接地線, PE線 Earth connection, PE connection
	L3	交流電輸入, 供給電壓 3~380-480V; 50/60Hz AC power in, 3~380-480VAC; 50/60Hz
	L2	交流電輸入, 供給電壓 3~380-480V; 50/60Hz AC power in, 3~380-480VAC; 50/60Hz
	L1	交流電輸入, 供給電壓 3~380-480V; 50/60Hz AC power in, 3~380-480VAC; 50/60Hz
P2	NO	狀態繼電器, 浮動狀態觸點; 常開; 關閉錯誤 State relay, alterable state contact; normally turn-on; turn-off when error
	COM	狀態繼電器, 公共連接; 連接等級 250VAC/2A State relay, universal connectivity; contact rating 250VAC/2A
	NC	狀態繼電器, 常閉, 解除錯誤 State relay, normally turn-off; turn-on when error

序號 HUB	信號 Portal	分配/功能 Description/Function
P3	RSA	RS485總線連接; RSA; MODBUS通訊協議 RTU方式 Bus connection RS485; RSA; MODBUS RTU
	RSB	RS485總線連接; RSB; MODBUS通訊協議 RTU方式 Bus connection RS485; RSB; MODBUS RTU
	GND	接口 P3 控制信號地線 Sing ground for control interface P3
	Ain1 U	控制輸入 0~10V DC/PWM Control input 0~10V DC/PWM
	4~20mA	控制輸入 4~20mA Control input 4~20mA
	20V	固定電壓輸出 20VDC (±10% max.50mA) Rated voltage output 20VDC (±10% max.50mA)
	10V	固定電壓輸出 10VDC (±10% max.10mA) Rated voltage output 10VDC (±10% max.10mA)
	Din1	數字式輸入端 1 電子設備的接通 Connection of Digital input 1 enabling of electronics 接通: 管腳為開路或者所施加的電壓為 5到50VDC; Enabling: oping pin or applied voltage 5-50V DC; 截止: 接地橋接或者所施加的電壓 <1VDC Disabling: bridge to GND or applied voltage <1V DC
	FG	速度反饋信號 Speed Singal Feedback